



advanced color quality

advanced integration to enterprise systems

advanced storage

advanced adobe integrations

advanced authentication

advanced performance

advanced scanning

Advanced made simple for you.

LOWER INVESTMENT HIGHER CAPABILITIES

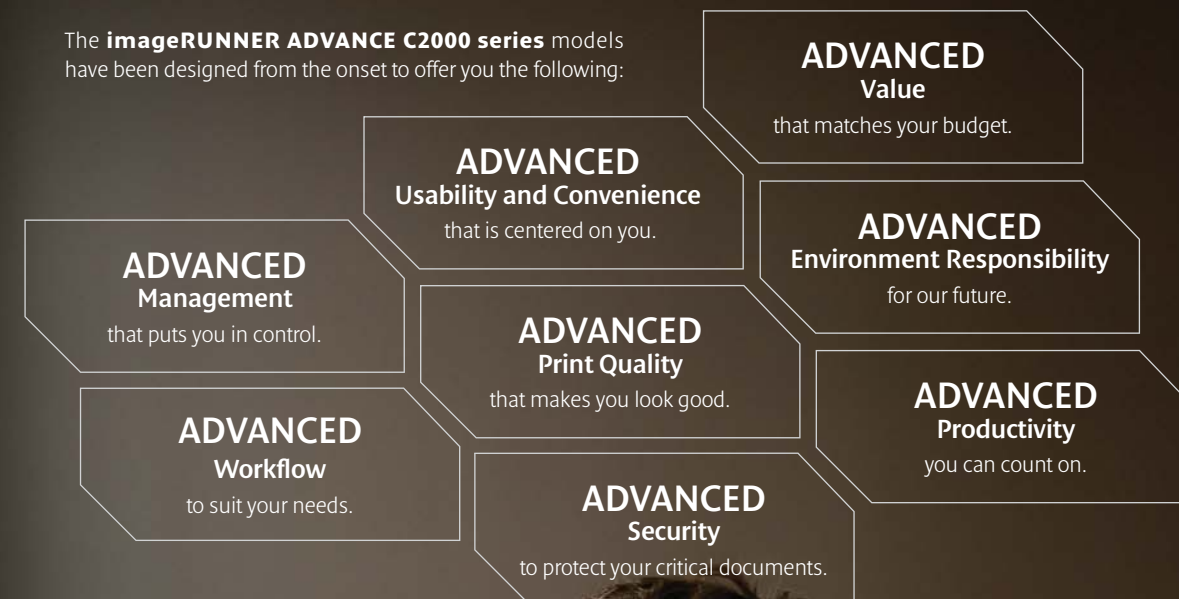
Canon's new **imageRUNNER ADVANCE C2000 series models** are engineered for economy and efficiency. Bringing you **color printing** and essential document functionalities in a single compact device, it is created to complement your office needs.

As standalone devices, the **C2000 series** models can deliver outstanding productivity through **print, copy, scan** and **fax**. When networked with higher end imageRUNNER ADVANCE devices, it can leverage on and extend your document infrastructure. And as with all imageRUNNER ADVANCE devices, it can be easily customized to better suit your needs. Backed by Canon's signature ease-of-use and reliability, the C2000 series models are perfect multifunctional partners for your office.



imageRUNNER ADVANCE C2000 series models
Your entry-level device with advanced capabilities.

The **imageRUNNER ADVANCE C2000 series** models have been designed from the onset to offer you the following:



Find out how we have made Advanced technologies work simpler for you.

ADVANCE

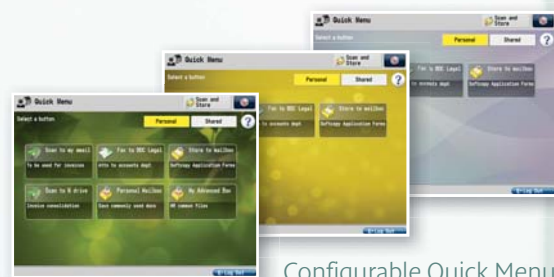
THE WAY YOU WORK

Every feature of the C2000 series models is built to enhance your work experience, simply and intuitively.



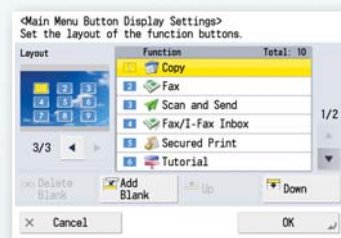
Intuitive User Interface

The new imageRUNNER ADVANCE C2000 series models interface provides you with a more pleasant navigation experience on an 5.7" full color, high-resolution TFT touchscreen.



Configurable Quick Menu

Complex, frequently used settings can be easily configured to run at the touch of a button. This streamlines every individual's workflow and increases productivity by letting you accomplish more in less time.



Customizable Menu

The size, the number of icons, and even the wallpaper displayed on the menu can be changed to suit individual or workgroup needs and preferences.



The Canon imageRUNNER ADVANCE C2000 series models are simply *simpler* to use.



Step-by-step Tutorial

The inbuilt onscreen tutorial helps you explore the full capabilities of the imageRUNNER ADVANCE C2000 series models, and enables you to learn and use more advanced functions with ease.



Plug and Print Capability

With standard USB input and optional media connectivity options such as Secure Digital (SD) or CompactFlash (CF) Cards, you can walk up to any imageRUNNER ADVANCE C2000 series models with your thumbdrive or memory card to scan and print on the spot.



Hassle-free Paper Loading

With an in-built auto paper sensor, the imageRUNNER ADVANCE C2000 series models are intelligent enough to detect paper sizes accurately. This reduces paper jams and misfeeds, translating to higher productivity.

ADVANCED

COLOR PRINTING TECHNOLOGY

Canon's C2000 series models bring you vivid, full color prints that truly shine.



High Resolution Brilliant Printouts

1200x1200 dpi printing resolution provides you with sharp and vivid printouts. Add to that the pQ Toner and an intelligent controller, the imageRUNNER ADVANCE C2000 series models bring you the crispest, most vibrant color printouts.



ADVANCED imageCHIP System Architecture

To meet and exceed the demands of today's businesses, Canon has developed a dual processor system. The image processor board works with the scanner, adjusts images, and ensures superior image quality and ultra-fast processing. The information processor boards controls user interface and coordinates device networking and connectivity. The result is higher quality printouts with shorter waiting time.



Genuine Adobe PostScript 3

The imageRUNNER ADVANCE C2000 series models support Genuine Adobe PostScript 3 printing capability, enabling you to deliver the desired output quality without worrying about font compatibility. True PostScript capability means that you will work seamlessly with PostScript workflows to achieve faster and higher quality prints compared to emulations. You will also enjoy improved office productivity with direct PDF printing and full support of Adobe fonts.

** For C2020, additional installation of optional 2.5inch/80 GB HDD-E1 is required.*



ADVANCED

OFFICE PRODUCTIVITY

The imageRUNNER ADVANCE C2000 series models are fully upgradeable. With a wide variety of options, you can customize it specifically to your needs.

Professional Looking Documents

With Canon's optional accessories, it is easy to impress and inspire with professional-grade reports and presentations. You can collate and staple documents while maintaining a compact footprint, saving valuable office space.

2-Line Fax

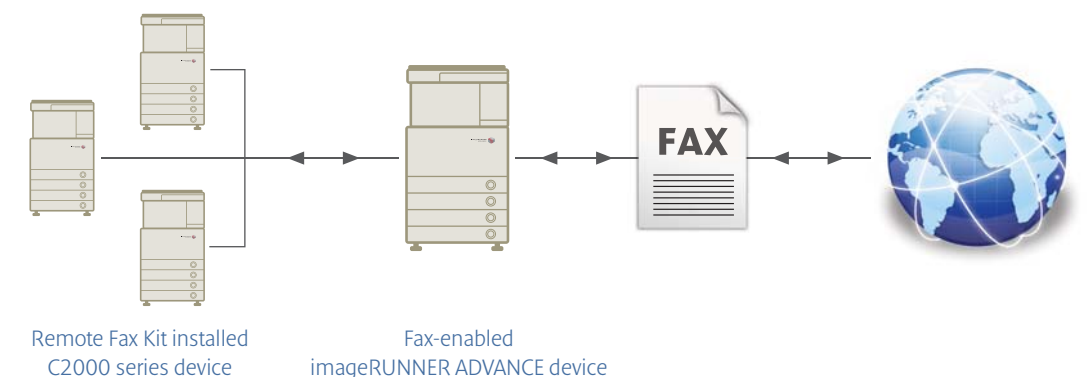
The imageRUNNER ADVANCE C2000 series models support optional Super G3 fax functionality for high-speed fax transactions. The 2-line fax feature is capable of handling high volumes of fax documents, while ensuring lesser busy signals and greater connectivity. You can also save cost and space by consolidating multiple fax devices into one shared device.

High Speed Scanning

Using the optional document feeder, you can archive your documents and create up to 50 crystal-clear reproductions of black & white and color documents each time you press the button. What's more, at a speed of 44ipm in black & white or color, you no longer need to spend as much time waiting at the device.

Remote Fax Collaboration

With the optional Remote Fax Kit, you can also fax through other fax-capable imageRUNNER ADVANCE devices in the network, even if the one you are using does not have a fax-board installed. This means significant cost-savings and convenience.



ADVANCED CONNECTIVITY AND INTERACTION

The C2000 series models make it more convenient to send business documents to your business partners.



Adobe Reader Extensions

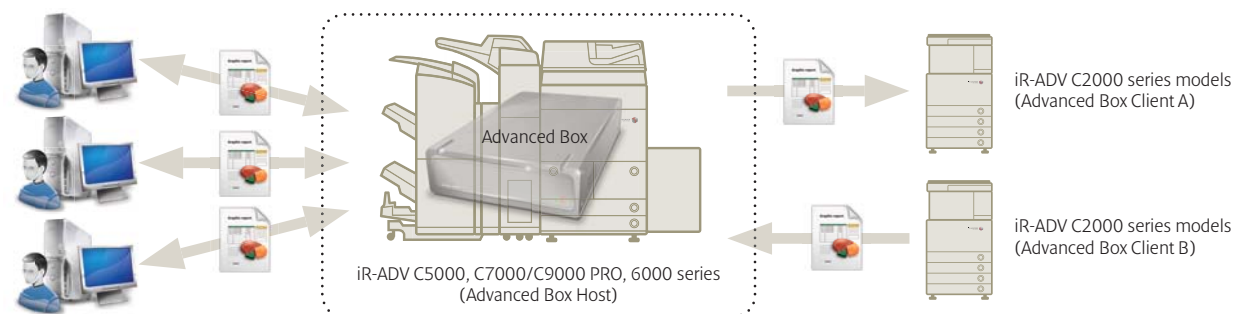
Enjoy Adobe Reader functionality without the extra cost of additional software licenses. With its inherent Adobe Reader Extensions PDF capability, you can share and review documents electronically - free-of-charge.

iW Function Flow

iW Function Flow is an imageRUNNER ADVANCE Series' core MEAP application that can transform time-consuming, multiple step tasks into simple workflows for each user. Scanning, e-mailing, faxing, and archiving can be done in one operation, all from a single button on the device control panel.

Scan and Send

In one simple operation, you can distribute scanned documents to multiple destinations, such as email, fax destinations and network folders. The wide range of formats include standard High Compression PDF, Adobe PDF Reader Extensions, Searchable PDF, Encrypted PDF, and XPS.



Send or retrieve files from your C2000 series models when networked with higher-end imageRUNNER ADVANCE models with the Advanced Box feature.

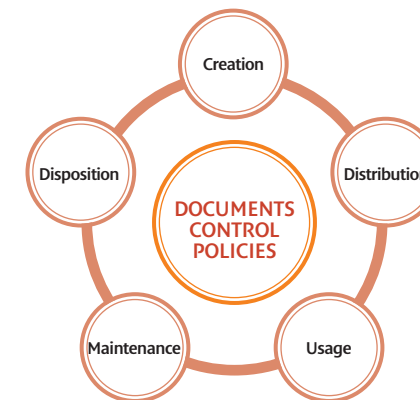
Advanced Box Collaboration

The C2000 series models are capable of document sharing with the Advanced Box feature available on higher-end imageRUNNER ADVANCE models. You can store files in the higher-end imageRUNNER ADVANCE models and also retrieve them remotely from your C2000 series models for printing. With this unique device linkage, multiple users can collaborate easily on a shared folder to access them from PCs or other networked imageRUNNER ADVANCE systems.



MEAP Connectors

MEAP Connectors bridges your Canon imageRUNNER ADVANCE and enables communication with external storage or document management systems. The software development kit (MEAP SDK) also enables third party vendors to develop systems based on your requirements. You can even create your own workflow tasks using the MEAP Connector using the PC-based Function Flow Editor tool.



Adobe LiveCycle® Rights Management

You can create a Policy Protected PDF document from the device by integrating it to the Adobe LiveCycle® Rights Management ES Server. When opened, a protected PDF file will contact the server to authenticate and update itself. What this does is to ensure that no unauthorized users will be able to open it, and that the latest updated version is always when shown opening the file.

ADVANCED CONTROL AND MAINTENANCE

The imageRUNNER ADVANCE C2000 series models provide simpler output management and device maintenance.

Centralized Remote Control

Using the Remote User Interface, your IT managers and system administrators will be able to control and manage output devices without having to travel to each machine to check machines or update their status.

e-Maintenance

Take control of your Canon devices while reducing administration burdens with e-Maintenance. With less down time and easy maintenance, you will have more uptime - and greater productivity.

* e-Maintenance works with most Canon copiers, printers and multifunctional devices. For more information on what models are supported, please contact Canon.

ADVANCED SECURITY FEATURES

Protect business-critical documents with the imageRUNNER ADVANCE C2000 series models.

Removable HDD Option enables hard disk drive to be removed and placed in a secure location when not in use.

Document Scan Lock embeds hidden tracking information in a document to restrict unauthorized copying or scanning, and track the origin.

HDD Encryption and Erase encrypts information before it is written to the hard drive, and permanently removes it by overwriting when the job is complete.

Card Authentication control access of devices in the office to authorized users with the use of optional ID cards.

Department ID restricts machine usage to those users with a valid ID and password.

Access Management System allows restriction of various features of copy, print, fax, scan, Mail Box by user, group or job function. You can even limit access for specific functions such as Color Copying.



ADVANCED ENVIRONMENT RESPONSIBILITY

The imageRUNNER ADVANCE C2000 series models are created with the environment in mind.

Here are some highlights:

Higher efficiency means lower emissions. By optimizing the document life cycle, we have lowered CO₂ emissions by more than 30% over previous models.

imageRUNNER ADVANCE uses 100% recycled plastic from past products. In addition, we subject ourselves to the most stringent standards, restricting the use of 24 hazardous substances (where EU RoHS directives restrict only six).

Changing our behaviour to change our environment. By encouraging digital previews, we reduce unnecessary prints and reduce mistakes. Administrators can also help encourage use of duplex settings and control color usage easily.

Green technologies makes up the imageRUNNER ADVANCE. Our pQ toner lowers energy consumption by minimizing heat and power requirements. Our RAPID fusing technology saves 75% more power usage than previous models. The list goes on.



ADVANCED IN VALUE

Discover the exceptional value of the C2000 series models and expand critical document capabilities for your office. With a Canon imageRUNNER ADVANCE multifunctional device, you can advance your business without breaking your budget.

To arrange for a demonstration, simply contact any of our sales staff in the relevant contact overleaf. It's that simple.

SPECIFICATIONS imageRUNNER ADVANCE C2000 series models

Type	Desktop	
Maximum Original Size	A3	
Copy Sizes	Cassette	305 x 457mm, A3, A4, A4R, A5R Custom Size 139.7 x 182mm to 304.8 x 457.2mm Optional Envelope Feeder, COM10 No.10, Monarch, DL, ISO-B5, ISO-C5
	Stack Bypass	ASR - SRA3 (320 x 450mm), Envelopes Custom Size 99 x 140mm to 320 x 457mm
Resolution	Reading	600dpi x 600dpi
	Copying	600dpi x 600dpi
	Printing	1200dpi x 1200dpi (text/line only)
Copy/Print Speed	A4	C2020: 20ppm (B&W/Color) C2020H: 20ppm (B&W/Color) C2025H: 25ppm (B&W/Color) C2030H: 30ppm (B&W/Color)
		C2020: 15ppm (B&W/Color) C2020H: 15ppm (B&W/Color) C2025H: 15ppm (B&W/Color) C2030H: 15ppm (B&W/Color)
	A3	
Magnification	Zoom	25-400%
First Copy Time	Black-and-White	5.9sec
	Full Color	8.9sec
Warm-Up Time	38 seconds	
Multiple Copies/Prints	1 to 999 sheets	
Duplexing	Standard automatic stackless	
Paper Weight	Cassette 1	64 to 120gsm
	Cassette 2* (Optional for iR-ADV C2020)	64 to 163gsm
	Stack Bypass	64 to 220gsm
	Duplex	64 to 120gsm
Paper Capacity	Standard	Cassette 1 (80gsm): 250 sheets Cassette 2 (80gsm): 550 (Optional for iR-ADV C2020) Stack Bypass (80gsm): 100 sheets
		Optional 550 sheets x 2 cassettes (80gsm)
		Total maximum capacity 2,000 sheets
	CPU	1.2GHz
Memory	Standard: 2GB RAM	
Hard Disk Drive	Standard 80GB for iR-ADV C2020H/C2025H/C2030H (Available Disk Space: 10GB) Optional 80GB for iR-ADV C2020	
Interface	Ethernet (1000Base-T/100Base-TX/10Base-T)	
	Wireless LAN (IEEE802.11b/g, Optional), USB2.0	
Power Supply	220-240V AC, 50/60Hz	
Power Consumption	1.5kW max	
Toner (Estimated Yield @ 5% coverage)	iR-ADV C2000 series	23,000 (B&W); 19,000 (Cyan, Magenta and Yellow)
Drum Yield	iR-ADV C2020/C2020H	43,000 (B&W); 36,000 (Cyan, Magenta and Yellow)
	iR-ADV C2025H/C2030H	53,000 (B&W); 44,000 (Cyan, Magenta and Yellow)
Dimensions (WxDxH)	Main Unit Only: iR-ADV C2020H/C2025H/C2030H - 565 x 680 x 928mm	
	iR-ADV C2020 - 565 x 680 x 928mm	
Weight	Main Unit Only: iR-ADV C2020H/C2025H/C2030H - Approximately 77kg iR-ADV C2020 - Approximately 77kg	
	With DADF: iR-ADV C2020H/C2025H/C2030H - Approximately 87kg iR-ADV C2020 - Approximately 87kg	
Print Specification		
PDL	UFR II (Standard), PCL 5c/6 (Optional), Adobe PostScript 3 (Optional)	
Resolution	1200dpi x 1200dpi (Text/Line only), 600dpi x 600dpi	
Memory	2GB (Uses Main Unit RAM)	
Hard Disk	Standard 80GB for iR-ADV C2020H/C2025H/C2030H (Available Disk Space: 10GB) Optional 80GB for iR-ADV C2020	
CPU	Canon Custom Processor, 1.2GHz (Uses Main Unit CPU)	
PS Fonts	Roman 136	
PCL Fonts	Roman 93, Bitmap10, OCR2	
Supported OS	PCL	Windows 2000/XP/Server2003/Vista/Server2008/Win7
	Adobe PostScript 3	Windows 2000/XP/Server2003/Vista/Server2008/Win7, Mac OSX (10.4.9 or later)
UFR II	Windows 2000/XP/Server2003/Vista/Server2008/Win7, Mac OSX (10.4.9 or later)	
Mac-PPD	Mac OS 9.1 or later, Mac OSX (10.2.8 or later)	
Interface	Ethernet (1000Base-T/100Base-TX/10Base-T)	
	Wireless LAN (IEEE802.11b/g, Optional), USB2.0	
Network Protocol	TCP/IP (LPD/Port9100/WSD/IP/PPS/SMB/FTP), IPv6, IPX/SPX (NDS, Bindery), AppleTalk	
Pull Scan	Network TWAIN Driver (75 to 600dpi 24bit color/8bit grayscale/2bit Black & White)	

Send Specification (Standard for iR-ADV C2020H/C2025H and C2030H, installation of Color Universal Send Kit-R1 is required for iR-ADV C2020)	
Scan Speed (A4, 300dpi)	4/4ipm (Color/B&W) for Simplex, 19ipm for Duplex scan by optional DADF-AC1
Scan Resolution	100dpi, 150dpi, 200 x 100dpi, 200dpi, 200 x 400dpi, 300dpi, 400dpi, 600dpi
Destinations	E-Mail/Internet FAX (SMTP), PC (SMB, FTP), iWDM, WebDAV
Address Book	LDAP, Local (Max.1800)
File Format	TIFF, JPEG, PDF, XPS, High compression PDF/XPS, PDF/A-1b, Optimize PDF for Web* (*To use Optimize PDF for Web, HDD installation is required for iR-ADV C2020)
Optional Accessories	
Universal Send Advanced Feature Set-E1	
File Format	Outline PDF (Trace & Smooth), Searchable PDF/XPS, Reader Extensions PDF
Universal Send Security Feature Set-D1	
File Format	Encrypted PDF, Device Signature PDF/XPS
Duplex Automatic Document Feeder-AC1	
Paper Size	A3, A4, A4R, A5, A5R
Paper Weight	50 to 128gsm
Max. Number of Originals	50 sheets (80gsm)
Document Scanning Speed (max.)	1-sided: 4/4ipm (Color/B&W)
	2-sided: 19ipm (Color/B&W)
Dimensions (W x D x H)	565mm x 540mm x 140mm
Weight	Approx. 7.9kg
Cassette Unit-X1 (Only for iR-ADV C2020)	
Type	Single-loading adjustable drawers
Paper Size	305 x 457mm, A3, A4, A4R, A5R Custom Size 139.7 x 182mm to 304.8 x 457.2mm
Paper Weight	64 to 163gsm
Paper Capacity	550 sheets (80gsm) x 1 cassette
Cassette Feeding Unit-AF1	
Type	2 Front-loading adjustable drawers
Paper Size	305 x 457mm, A3, A4, A4R, A5R Custom Size 139.7 x 182mm to 304.8 x 457.2mm
Paper Weight	64 to 163gsm
Paper Capacity	550 sheets (80gsm) x 2 cassettes
Dimensions (W x D x H)	565mm x 650mm x 248mm
Weight	Approx. 27.5 kg
Inner Finisher A1	
Number of Trays	One stack tray (Optional 2nd Tray)
Tray Capacity	A4, A5, A5R
	A4-A5R: 750 sheets
Staple Position	A3, A4R
	A3, A4R: 500 sheets
Staple Capacity	Corner, Double
	A4: 30 sheets
Staple Capacity	A3: 30 sheets
	700 x 540 x 260mm
Dimensions (W x D x H)	
Weight Approx.	Approx. 14.0kg (when the optional Inner Finisher Additional Tray-A1 is attached)
Other Optional Accessories	
Unit-C1, Utility Tray-A2, Copy Card Reader Attachment-B2, Card Reader-C1, USB Device Port-B2, Multimedia Reader/Writer-A2, Serial Interface Kit-K1, Copy Control Interface Kit-A1, FL Cassette-AN1, FL Cassette-AM1, Stamp Ink Cartridge-C1, Stamp Unit-B1, Staple-J1, Reader Heater-H1, Cassette Heater Unit-37, PCL Printer Kit-AG1, PS Printer Kit-AG1, Direct Print Kit (for PDF)-H1, Direct Print Kit (for XPS)-H1, Barcode Printing Kit-D1, Encrypted Printing Software-D1, Universal Send Digital User Signature Kit-C1, Super G3 Fax Board-AH1, Super G3 2nd Line Fax Board-AH1, Remote Fax Kit-A1, Secure Watermark-B1, Document Scan Lock Kit-A1, 2.5inch/80GB HDD-E1, Data Erase Kit-C1, HDD Encryption Kit-C3, Removable HDD Kit-AE1, Access Management System Kit-B1, Web Access Software-H1, Expansion Bus-F2, Wireless LAN Board-B2, IPsec Board-B2, ADF Access Handle-A1, Remote Operators Software Kit-B1, Voice Guidance-F2, Voice Operation Kit-C2	
This brochure and the specifications of the product have been developed prior to the date of product launch. These specifications are subject to change without notice. Therefore no representations or warranties, either express or implied, are made of the fitness of this product for a particular purpose. In no circumstances shall the information in this brochure be considered part of our terms and conditions of sale. You are advised to check the prevailing specification immediately prior to purchase. All company and/or product names are trademarks and/or registered trademarks of their respective manufacturers in their markets and/or countries.	



Integrated Solutions

To integrate more capabilities into your imageRUNNER ADVANCE device, simply speak with your friendly Canon representative.

Canon

Delighting You Always

SOUTH & SOUTHEAST ASIA REGIONAL HEADQUARTERS

Canon Singapore Pte. Ltd.
1 HarbourFront Avenue #04-01, Keppel Bay Tower, Singapore 098632
Tel: +65-6799 8888 | Fax: +65-6799 8882

www.canon-asia.com
www.canon.com.sg

CANON SALES SUBSIDIARIES & BUSINESS PARTNERS

Afghanistan:

Megaplust Afghanistan Ltd.
House No.408, Street No.8,
Taimani, Kabul, Afghanistan
Tel: 93 700-228 832
Fax: 93 20-220 1259
Email: info@megaplust.com.af

Bangladesh:

Flora Limited
Adamjee Court Annex-2 (4th Floor)
119-120 Motijheel Commercial Area
Dhaka 1000 Bangladesh
Tel: 880-2-716-2742-46 / 225
Fax: 880-2-955-0030
www.floralimited.com

Brunei:

Interhouse Company
No. 5-7 Bunut Jaya Complex
Spg 574 Jalan Tutong BF1320
P.O. Box 423, Seri Complex
Bandar Seri Begawan BA 1779
Brunei Darussalam
Tel: 673-2-653-001
Fax: 673-2-653-003

Cambodia:

Royal Cambodia Co., Ltd
#437 Preah Monivong Blvd
Phnom Penh
Kingdom of Cambodia
Tel: 855-23-428955
Fax: 855-23-722961

Hong Kong:

Canon Hongkong Co. Ltd
19F, The Metropolis Tower
10 Metropolis Drive
Hung Hom, Hong Kong
Tel: 852-3191-2388
Fax: 852-2369-3800
www.canon.com.hk

India:

Canon India Private Limited
2nd Floor, Tower A & B
Cyber Greens, DLF Phase III
Gurgaon - 122002
Haryana, India
Tel: 91-124-416 0000
Fax: 91-124-416 0011
www.canon.co.in

Indonesia:

PT Samafitro
Jalan Ir. H Juanda No.8
Jakarta 10120, Indonesia
Tel: 62-21-345 5521
Fax: 62-21-384 4271
www.samafitro.co.id

Malaysia:

Canon Marketing (Malaysia) Sdn Bhd
Block D, Peremba Square
Saujana Resort Section U2,
40150 Shah Alam
Selangor Darul Ehsan, Malaysia
Tel: 60-3-7844 6000 / 7845 0055
Fax: 60-3-7844 6196 / 6198
www.canon.com.my

Maldives:

Simdi Company Pvt Ltd.
G. Manaam Building,
2/1 Neeloafaru Magu,
Male' 20-129, Maldives
Tel: 960-333 4421
Fax: 960-333 4424

Myanmar:

Myanmar Golden Rock International Co., Ltd
Level 6, FJV Commercial Centre
No: 422-426, Strand Road
Botataung Township
Yangon, Myanmar
Tel: 95-1-202092 to 96
Fax: 95-1-202079
Email: sales@mgr.com.mm

Nepal:

International Electronics Concern (P) Ltd
Kha 14, 1st Floor
Haratibhawan Putalisadak
Ramshah Path, Kathmandu, Nepal
P.O. Box 12588
Tel: 977-1-442 1991
Fax: 977-1-442 1909

Pakistan:

Shirazi Trading Company (Pvt.) Ltd
8th Floor, Adamjee House
I.I. Chundrigar Road
Karachi 74000 Pakistan
Tel: 92-21-3241 (7659), (7737) or (7746)
Fax: 92-21-(3241 7747), (3242 0417) or
(3242 0418)
www.shirazitrading.com.pk

Philippines:

Canon Marketing (Philippines), Inc.
Ground Floor Commerce and Industry Plaza.
Campus Ave. Cor. Park Ave., McKinley Hill
Fort Bonifacio, Taguig City
Tel: 632-884-9000
Fax: 632-894-4174
www.canon.com.ph

Sri Lanka:

Metropolitan Office (Pvt) Ltd
12, Magazine Road Colombo 08
Sri Lanka
Tel: 94-11-470 0200
Fax: 94-11-470 0267

Thailand:

Canon Marketing (Thailand) Co. Ltd
10th Floor Bangkok City Tower
179/34-45 South Sathorn Road
Bangkok 10120
Tel: 66-2-344 9999
Fax: 66-2-344 9960
www.canon.co.th

Vietnam:

Canon Singapore Pte Ltd
Ho Chi Minh City Representative Office
Floor 6, Saigon Centre Building
65 Le Loi, Ben Nghe Ward, District 1
Ho Chi Minh City, Vietnam
Tel: 848-3820 0466
Fax: 848-3820 0477
www.canon.com.vn

Hanoi City Representative Office:

15 Nguyen Chi Thanh, Ba Dinh
Hanoi, Vietnam
Tel: 844-3771 1677
Fax: 844-3771 1678
www.canon.com.vn