



KONICA MINOLTA

bizhub c200

Colour Printer • Colour Copier • Scanner • Fax • E-mail

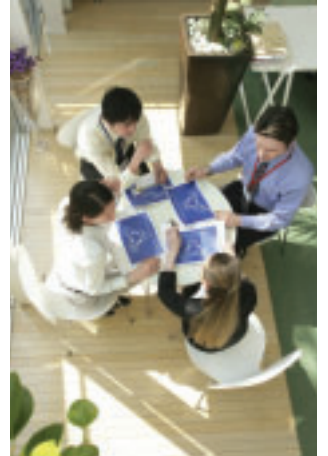
We've made colour more common.



A4 Monochrome **20** pages/min
A4 Full Color **20** pages/min

Model shown with options.

The essentials of imaging



Make colour fit your company and your costs.

To ensure that the use of colour documents and presentations isn't only for large companies, Konica Minolta created the compact, easy-to-use and surprisingly affordable bizhub C200. As everyone knows, colour makes your presentations and proposals more convincing. And, this compact machine boasts excellent colour image quality. It also reaches copy and print speeds of 20 pages per minute in both black & white and colour, to make sure your documents are ready when you need them. Whether you're copying, printing, scanning or faxing, the C200 promises to be just the right fit for you, your office and your company's success.



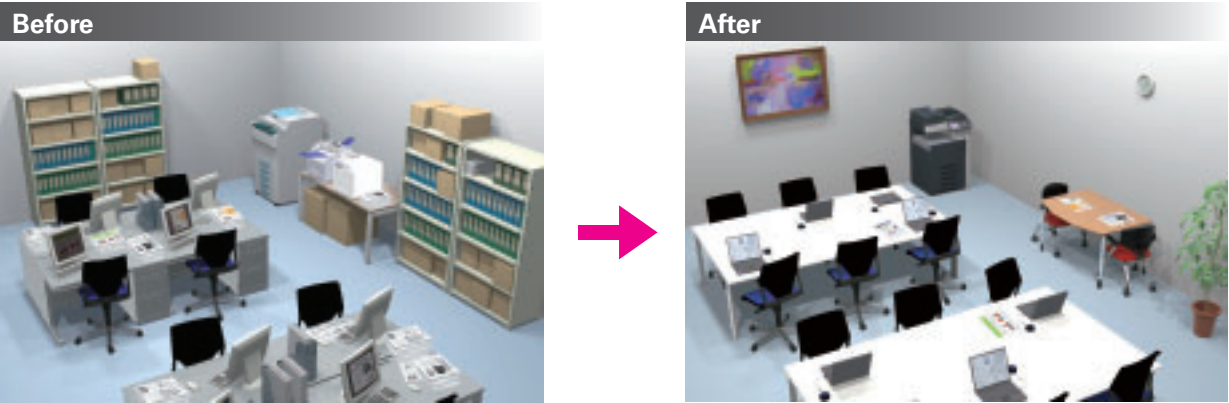
bizhub 
C200

Model shown with options.



Make your office more efficient.

The multifunctional bizhub C200 helps small offices like yours become more efficient and more friendly places to work. This all-in-one machine lets you streamline your office by allowing you to relocate print, copy, scan and fax functions to one convenient site. By utilising the C200's scanner you can also free up valuable floor space by converting hard documents into digital files. Financially, the C200 allows you to lower your total cost of ownership (TCO) by getting rid of your black & white copier, colour printer, scanner and fax and replacing them with one efficient machine capable of taking on the work of all those devices. The C200's Internet and IP Address Fax features will also help you reduce communication costs. And, the bizhub's exceptional energy efficiency will cut utility costs. Finally, the C200's ultra-quiet operation also helps create a less noisy, and more friendly work environment.



All-in-One Design

A diagram showing four separate office machines: a Fax, a Scanner, a Colour printer, and a B&W copier. These are enclosed in a dashed red box. An arrow points down from this box to a single, compact bizhub C200 machine, illustrating the 'All-in-One Design'.

Compact Body

A diagram comparing the height of two machines. The top machine, labeled C203, has a height of 927mm. The bottom machine, labeled C200, has a height of 688mm. A vertical dashed line indicates the difference in height, which is 239mm. Silhouettes of a person are shown next to each machine for scale.

Documents into Digital Files

A diagram showing a stack of documents being processed by a machine. Arrows point from the machine to a PC and a Server. The files are labeled as PDF, TIFF, and JPEG, illustrating the process of converting physical documents into digital files.

Quiet Operation

Quietest Colour bizhub 30.4dB*

A photograph of the bizhub C200 machine. Below the image, there is a small text note: "* When on standby. (Measured as sound pressure level in accordance with ISO7779.)"

Energy Efficiency

Typical Electricity Consumption (TEC) Value

A bar chart comparing the Typical Electricity Consumption (TEC) of the Energy Star Standard and the bizhub C200. The Energy Star Standard bar is brown and reaches a value of 9,000. The bizhub C200 bar is red and reaches a value of 3,600. The y-axis is labeled from 0 to 10,000 in increments of 2,000.

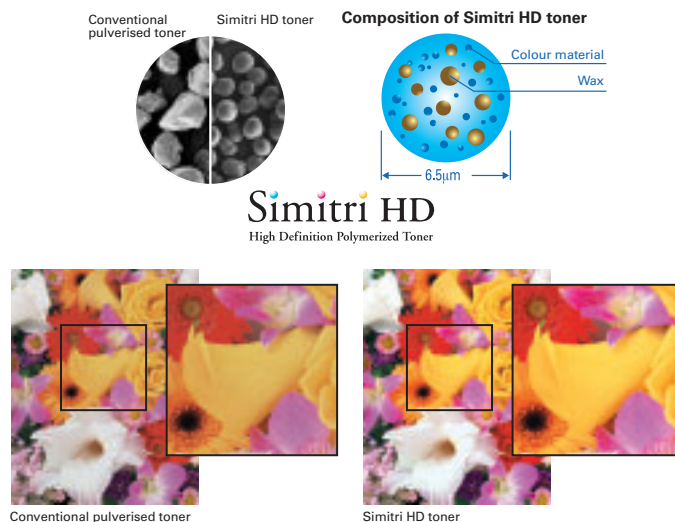
Make the most of your valuable time.

Whether you're working in black & white or in colour, printing, copying, scanning or faxing, the bizhub C200 helps you get your work done efficiently and creatively every time.

The C200 offers high-speed output, vivid colour and a host of other features and functions built to help you and your office improve its workflow productivity.

High Image Quality

Due to a collection of technologies like our polymerised Simitri HD Toner, the C200 promises exceptional image quality. Simitri HD Toner is resistant to wear and tear thanks to its high fade resistance, matching that of professional printing ink. This makes documents suitable for long-term storage. Thanks to the toner's oil-less fixing, it is also easy to write on printed documents with a water-based pen or securely stick adhesive notes to them.



Images are for illustrative purposes only.

Tandem Engine

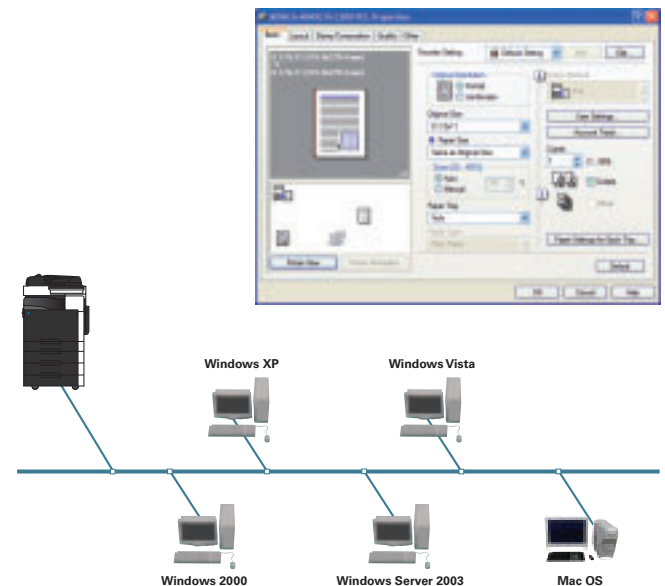
The C200 is equipped with the same type of tandem engine usually found in higher-end MFP models. This engine enables the C200 to achieve both high image quality and output speeds of 20 pages per minute in either black & white or colour.



High-Performance Emperon Print System



Standard on the C200, the Emperon Print System provides multi-OS support that can be utilised in a mixed network (Macintosh and Windows-based PCs) environment. The C200's Emperon also features standard PCL and PostScript drivers.



Thick Paper Compatibility and Large Paper Capacity

The C200 accommodates thick paper up to 256g/m² in all of its trays. In terms of capacity, it holds up to 3,350 sheets of paper, including 100 sheets in its multiple bypass tray. And, it accommodates a wide range of paper sizes including paper from A3 wide to A6, as well as envelopes and labels.



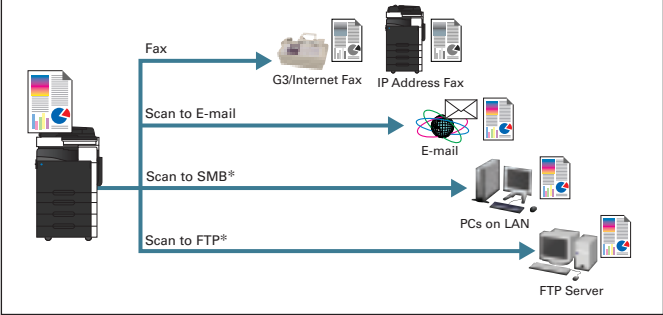


Scanning

With the C200's scanner you have the ability to scan documents, convert them to digital data and then send them to a variety of destinations; these include Scan to E-mail, Scan to FTP*, Scan to SMB* and TWAIN scan*.

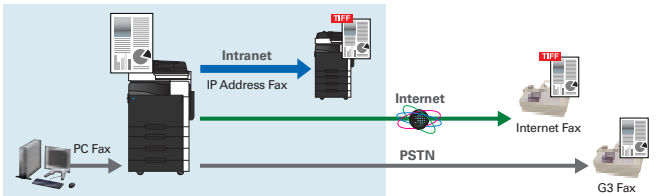
Multi-Method Send

Get more done in less time with Multi-Method Send. The C200's Multi-Method Send allows you to send data by fax and e-mail to multiple destinations with a single operation while simultaneously sending the data to SMB or FTP.



Fax

The C200 boasts an optional fax with features that utilise network infrastructure—Internet and intranets—to move information faster and to provide cost reductions. Besides our G3 fax, this machine offers Internet Fax, IP Address Fax and PC Fax (for Windows only) functions.

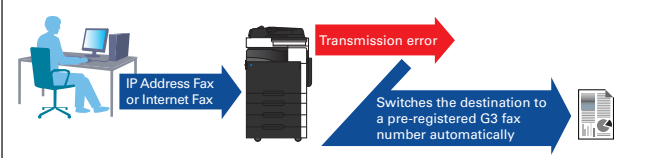


IP Address Fax

The C200's IP Address Fax allows you to cost-effectively send a black & white fax to any bizhub on the network that supports IP Address Fax simply by selecting an IP address. Because this method uses existing network systems, no additional costs are associated with it.

IP Address/G3 Fax Automatic Switching

Should a transmission error occur while sending an IP Address Fax or Internet Fax, the C200 automatically switches the destination to a pre-registered G3 fax number, ensuring the certainty of your transmission.



Security and Management

The bizhub C200's security and management features were developed to help you maintain your company's bottom line. bizhub's department management function offers the security of departmental authentication, and allows the administrator to restrict functions* such as colour output, which keeps overall bizhub utilisation costs under control.

Universal Design

Designed to accommodate anyone regardless of age, gender, body size or disability, the C200 features a vertically tilting control panel with improved tilt mechanism, easy-grip paper trays and front access to toner and paper. The "start" button also has an easy-to-see blue LED light.



No-grip tilting control panel



Large, easy-grip paper trays



Convenient front access



Optional Assist Handle for those with disabilities

*Available soon. Consult your sales representative for release dates.

bizhub C200 Functions

Copy Functions

•Text, Photo, Text/Photo, Map, Dot Matrix modes •Single colour copy (21 colours) •Auto density adjustment (for background only) •Auto paper selection •Auto zoom selection •Mixed originals •Image rotation •Program registration (up to 10) •Neg./pos. reverse •Horizontal/vertical individual zoom settings •2-in-1/4-in-1 copy •Interrupt mode •Slightly reduced copy •Program job •Crisscross offset

Print Functions

•Document, Photo, DTP, Web, CAD modes •Poster mode •N-in-1, N x N (2/4/6/9/16 in 1, 2x2, 3x3, 4x4) •Multiple protocol compatibility: RAW, LPD/LPR (AppleTalk™), IPP*, NetWare*, SMB* •Stamp (Watermark) •Overlay •180° rotation •Blank page control (PCL only) •Margin setting (position/size) •Print status notification (Software required)* •Batch print (Optional) •TIFF Direct Print (Software required)* •PDF Direct Print (Software required)*

Copy/Print Functions

•Multi-job •Duplex copy/print (Optional) •Enlarge/reduce/zoom •Glossy mode copy/print •2-colour copy/print (PCL only) •Sort •Group •Shift offset (Optional) •Auto tray switch

Scanning Functions

•One-scan ACS/mixed original scanning •Multi-Method Send •Scan to E-mail •E-mail subject/E-mail body text (administrator mode) •Scan to SMB* •Scan to FTP* •E-mail notification of Scan to SMB/FTP URL* •TWAIN Scan* (Raw mode is optional) •File conversion (TIFF/PDF/JPEG) •Single or multiple file saving

Fax Functions (Optional)

•G3 Fax •Text, Photo, Text/Photo, Dot Matrix, Map modes •600 dpi fax (Not available with G3 Fax) •Fax Multi Line •Rotation transmission/reception •2-in-1 transmission •2-sided transmission •Memory transmission •Quick scan transmission •Priority transmission •Timer transmission •Remote copy •Remote output •Memory RX (print as needed) •Memory reception (save when printing fails) •Fax forwarding •Bulletin setting •Polling transmission/reception •Broadcast transmission •F-code •ECM OFF (Service rep setting) •V.34 OFF (Service rep setting) •Overseas transmission •Transmission report •Stamp/composition (Watermark) •Scanned stamp •Internet Fax •Internet Fax result notification •PC Fax •N-in-1, N x N (PC Fax) •Cover sheet (PC Fax) •IP Address Fax (B&W only) •IP address/G3 fax automatic switching •Relay distribution (including IP relay)

Scanning/Fax Functions (Optional)

•One-touch registration (up to 300) •Program transmission (up to 30) •LDAP search*

Security & Management Functions

•Department management (up to 50 depts) (Function restrictions* (copy/print/data transmission)) •Secure Print (Win/Mac OSX only) (Optional) •Secure Print result notification (Optional)* •Scan to E-mail SMTP authentication, POP before SMTP •Confidential fax transmission/reception (Optional) •Password fax transmission/reception (Optional) •Automatic fax destination verification and transmission (CSI: Called Subscriber ID) (Optional)

*Available soon. Consult your sales representative for release dates.

Specifications

bizhub C200

Type	Desktop Full-Colour Copier/Printer/Scanner	
Colour Support	Full Colour	
Copy Resolution	Scan	Main: 600dpi x Sub: 600dpi
	Print	Main: 600dpi x Sub: 600dpi
Gradation	256	
Memory Capacity (Std./Max.)	576MB/1,088MB	
HDD	Not Available	
Original Type	Sheets, Books, Objects	
Max. Original Size	A3 (11" x 17")	
Output Size	A3-A5, A3 Wide (12" x 18"), A6 Lengthwise	
Image Loss	Max. 4.2mm for top edge, Max.3mm for bottom/right/left edges	
Warm-Up Time (23°C, std. voltage) (Time from when sub-power is turned on)	Colour	40 sec. or less
	B&W	37 sec. or less
First Copy Time (23°C, std. voltage)	Colour	13.5 sec. or less
	B&W	10 sec. or less
Copy Speed	Colour	20 pages/min (A4 Crosswise), 9.8 pages/min (A3)
	B&W	20 pages/min (A4 Crosswise), 9.8 pages/min (A3)
Copy Magnification	Fixed Same Magnification	1:1±0.5% or less
	Scaling Up	1:1.154/1.224/1.414/2.000
	Scaling Down	1:0.866/0.816/0.707/0.500
	Preset	3 types
	Zoom	25-400% (in 0.1% increments)
	Lengthwise Crosswise Individual Settings	25-400% (in 0.1% increments)
Paper Capacity (80g/m ² paper)	Standard	250 sheets (1st Tray)
	Optional	500 sheets (PC-105), 500 sheets (PC-104), 500x2 sheets (PC-204), 2,500 sheets (PC-405), 100 sheets (Multi Bypass Tray MB-502)
Paper Weight	Trays 1-4	60-256g/m ²
	Multi Bypass Tray	60-256g/m ²
Multiple Copy	1-999 sheets	
Power Requirements	AC220-240V 6A (50/60Hz)	
Max. Power Consumption	125kW or less	
Dimensions [W] x [D] x [H]	620mm x 688mm x 648mm (24-1/2" x 27 x 25-1/2")	
Weight	Approx. 68kg (150lb)	
Space Requirements [W] x [D] (Standard system)	620mm x 688mm (24-1/2" x 27)	

Controller

Type	Internal Type	
CPU	Power PC 440EP 667Hz	
Memory	Shared with copier	
Print Speed	Same as Copy Speed (when using the same original)	
HDD	Not available	
Print Resolution	Main: 600dpi x Sub: 600dpi	
PDL	PCL5eK Emulation, PCL XL ver.3.0 Emulation, PostScript 3 Emulation (3015)	
Protocol	TCP/IP, LPR, IPP, SPX, NDLS supported*, SMB (NetBEUI)*, IPP10*, EtherTalk*	
Support OS	Server	Windows 2000/Server 2003/Server 2003 x64 Edition
	Client	Windows 2000/XP/Vista/XP x64 Edition/Vista x64 Edition/MacOS 9.2 or later/MacOS X ver.10.2-10.4 (10.5)/Mac Intel OS X 10.4 (10.5)*
Font	PCL	80 European fonts
	PS	137 European Type1 fonts
Interface	Ethernet (10BASE-T/100BASE-TX), USB2.0 Compatible	

Scanning Function

Type	Full-Colour Scanner	
Interface	Ethernet (10BASE-T/100BASE-TX)	
Driver	TWAIN Driver*	
Protocol	TCP/IP (SMTP, FTP*, SMB*)	
Support OS	Windows 2000/XP/MacOS X ver.10.2 or later	
Scanning Speed (A4 Crosswise)	Colour / B&W	20/40 pages/min (300dpi)
Scanning Size	Max. A3	
Output Format	TIFF (#2 standard, No colour TIFF), PDF (V1.3 standard), JPEG	
Scanning Resolution	Push	200/300/400/600dpi
	Pull (only TWAIN* scan)	100/200/300/400/600dpi
Main Functions	Scan to E-Mail, Scan to FTP*, Scan to SMB* (Network TWAIN* (via Ethernet TCP/IP))	
Other Functions	Multi-Method Send, Authentication for e-mail sending	

IP Address Fax Function

(Optional Fax Kit FK-507 is required.)

Protocol Transmission	SMTP, TCP/IP
Encoding System	MH, MR, MMR, JPEG
Sending Paper Size	Max. A3
Recording Paper Size	Flatbed Scan: Max. A3 Automatic Document Feeder Scan: B&W: Max. 297 x 1,000mm
Scanning Speed (A4 Crosswise)	B&W 200dpi: 40ppm
Interface	Ethernet (10BASE-T/100BASE-TX)
Resolution	200/300/400/600dpi

*Available soon. Consult your sales representative for release dates.

Product appearance, configuration and/or specifications are subject to change without notice.

The Konica Minolta logo and the symbol mark, and "The essentials of imaging" are registered trademarks or trademarks of Konica Minolta Holdings, Inc.

bizhub, PageScope, Simitri and the Emperon logo are registered trademarks or trademarks of KONICA MINOLTA BUSINESS TECHNOLOGIES, INC.

Windows is a registered trademark of Microsoft Corporation in the United States and other countries.

Adobe and PostScript are registered trademarks or trademarks of Adobe Systems Incorporated.

All other brand and product names are registered trademarks or trademarks of their respective owners.

Konica Minolta copiers and multi-functional peripherals are designed with the environment in mind.



- Have Earned ENERGY STAR for Energy Efficiency
- The Use of Recycled Materials
- Production at ISO-Certified Factories

These products have earned the ENERGY STAR for energy efficiency. ENERGY STAR is a U.S. registered mark.

Fax Function

(Optional Fax Kit FK-507 is required.)

Communication	ECM/G3
Compatible Lines	PSTN, PBX
Line Density	G3: 8 dot/mm x 3.85 line/mm to 400x400dpi
Modem Speed	2.4kbps-33.6kbps
Compression	MH/MR/MMR/JBIG
Sending Paper Size	Flatbed Scan: Max. A3 (Long Length Max. 1,000mm) Automatic Document Feeder Scan: Max. 297x1,000mm (Simplex), Max. 297x432mm (Duplex)
Recording Paper Size	Max. A3 (Long Length Record Max. 1,000mm – following the page division –)
Transmission Speed	Less than 3 sec. (A4, V.34, 33.6kbps, JBIG)
Scanning Speed (A4 Crosswise)	B&W Fine Mode: 40ppm
Memory	Shared with copier
Number of Abbr. Dials	300
Number of Program Dials	30
Number of Group Dials	30
Sequential Multiple Station Transmission	Max. 210

System Options

Diagram illustrating the bizhub C200 system options and their connections to the main unit:

- Fax Kit FK-507**: Allows the C200 to perform fax functions.
- Fax Multi Line ML-504**: Connects to the Fax Kit FK-507.
- Original Cover OC-508**: Connects to the top of the unit.
- Automatic Document Feeder DF-612**: Connects to the top of the unit.
- Stamp Unit SP-503**: Connects to the top of the unit.
- Assist Handle AH-101**: Connects to the side of the unit.
- Job Separator JS-505**: Separates and designates location for output.
- Expanded Memory Unit EM-310**: Connects to the side of the unit.
- Mount Kit MK-723¹**: Connects to the side of the unit.
- Mount Kit MK-718¹**: Connects to the side of the unit.
- Mount Kit MK-712¹**: Connects to the side of the unit.
- Key Counter Mount Kit 1¹**: Connects to the side of the unit.
- Working Table WT-503**: Connects to the front of the unit.
- Automatic Duplex Unit AD-505**: Connects to the front of the unit.
- Multi Bypass Tray MB-502**: Connects to the front of the unit.
- Paper Feed Cabinet PC-105**: Equipped with a paper drawer that supplies 500 sheets.
- Paper Feed Cabinet PC-104²**: Equipped with a paper drawer that supplies 500 sheets.
- Paper Feed Cabinet PC-204²**: Equipped with a paper drawer that supplies 500 x 2 sheets.
- Paper Feed Cabinet PC-405²**: Equipped with a paper drawer that supplies a max. 2,500 sheets.
- Desk DK-504²**: Connects to the front of the unit.

¹ Available soon. Consult your sales representative for release dates.
² PC-105 is required.

Required Options

	Fax Kit FK-507	Fax Multi Line ML-504	Expanded Memory Unit EM-310 <512MB>	Automatic Duplex Unit AD-505	Job Separator JS-505
G3 Fax	✓				
Fax Multi Line		✓			
PC Fax	✓				
Internet Fax	✓				
IP Address Fax (B&W only)	✓				
IP relay distribution	✓				
IP address/G3 fax automatic switching	✓				
Duplex copy/print			✓	✓	
Shift Offset (Copy/Print)					✓
Secure Print			✓		
Batch print (PC printing)			✓		
Continuous reception (PC printing)			✓		
TWAIN Scan* Raw mode			✓		

*Available soon. Consult your sales representative for release dates.

Requirements for safe use

- Please read and follow the instruction manual to ensure safe operation.
- Only operate using appropriate power supply and voltage.
- Connecting the earth wire to an inappropriate place may cause explosion or electric shock. Please connect accordingly (Taiwan and the Philippines only).



This catalogue was printed using soy ink.

KONICA MINOLTA BUSINESS TECHNOLOGIES, INC.

1-6-1 Marunouchi Chiyoda-ku, Tokyo, Japan
<http://www.biz.konicaminolta.com>