

| GENERAL | |
|--|---|
| Type | Desktop |
| Maximum original paper size | A3 |
| Print/copy speed (A4) | Colour: 55/65/65 ppm, B&W: 55/65/75 ppm |
| Paper input capacity (80g/m ² , A4) | Standard: 540 sheets x 2 (Drawer), 2,320 sheets (Tandem LCF) Optional: 2,500 sheets (LCF) |
| Paper size & weight | Drawers: A5R—320 x 460mm, 64—256g/m ² Stack Feed Bypass: A6R—300 x 482mm, 64—300g/m ² Stack Feed Bypass (Banner): 313 x 1200, 64—163g/m ² 80GB (Shared)/Main memory: 1GB, Page memory: 1GB Approx. 70 sec. from low-power mode |
| Hard disk drive/memory | Max. 2.4kW (220-240V) |
| Warm-up time | 980 x 698 x 1,540 mm |
| Power consumption | Approx. 245 kg |
| Dimensions (W x D x H) | |
| Weight | |

| PRINTING FUNCTIONS | |
|-------------------------|--|
| CPU | 1.2GHz (Shared) |
| Hard disk drive | 80GB (Shared) |
| Print engine resolution | Max. 600 x 600 dpi, 8bit Max. 1,200 x 1,200 dpi, 2bit (PostScript Only) |
| Suppoted OS | Windows 2000/XP/2003 server/Vista/2008 Server Mac OS X 10.1 or later UNIX (SUN Solaris 2.6, 2.7, 7.8, 8, 9, HP-UX (10.20, 11x), IBM AIX (4.3.3), Linux, SCO) Standard: 10/100/1000baseT, USB 2.0/Hi Speed USB Option: IEEE802.11b/g (Wireless LAN module) |
| Network OS | Windows 2000/2003 server/2008 Server/Vista, Citrix MetaFrame |
| Network protocols | TCP/IP (v4/v6), IPX/SPX, EtherTalk, NetBIOS over TCP/IP |
| PDL | PCL6 Emulation, PostScript3 Emulation, XPS |
| Major features | •Scheduled Print Job •Private Print •Proof Print •Watermark Printing •N-up Printing •Magazine Sort •Image Overlay •Booklet Printing •Tab Paper Printing •Save to Box (e-filing) •Department Code (1,000 kinds) •Account Code (10,000 kinds) •USB Direct Print |

| COPYING FUNCTIONS | |
|-------------------------|---|
| Original size | A3 — A5R |
| Copy size | Drawers: 320mm x 460mm — A5R, SFB: 330mm x 482mm— A6R |
| Resolution | Scanning: 600 x 600 dpi, 10bit Copying: 600 x 600 dpi, 8 bit (Full colour), 2400 x 600 dpi, 1 bit (B&W) 60/60/60 spm (A4) Min. 5.3/5.3/4.6 sec. (B&W), Min. 6.5 sec. (Full colour) |
| Original scanning speed | 1 to 9,999 sheets |
| First copy time | Auto-Colour Selection(ACS), Full Colour, Twin Colour, Mono Colour, B&W |
| Multiple copies | B&W: Text, Text/Photo, Photo, Image Smoothing |
| Colour mode | Full Colour: Text, Text/Photo, Photo, Printed Image, Map Twin Colour: Text, Text/Photo, Printed Image Mono Colour: Text, Text/Photo, Photo, Printed Image, Map |
| Copy mode | ACS: Text, Text/Photo, Printed Image 25% to 400% (1% Increment) (Glass) 25% to 200% (1% Increment) (Original on RADF) Automatic/Manual (11 steps) |
| Reproduction Ratio | |
| Exposure control | |
| Major features | •2 in 1/4 in 1/8 in 1(Duplex) •Rotation Copy •Alternation •Annotation •X-Y Zoom •Trimming/Masking •Magazine Sort •Job Reservation •Job Build •Center Erase •Image Shift •Proof Copy •RGB Adjustment •Background Adjustment •Twin Colour Copying •Colour Adjustment |

| SCANNING FUNCTIONS | |
|---|--|
| Scanning speed (A4) | Colour/B&W: Up to 77 spm(300 dpi) |
| Scanning mode | Auto-Colour Selection(ACS), Colour, Grayscale, B&W |
| Scan format (Colour) | JPEG, TIFF-Multi/Single page, PDF-Multi/Single Page, Slim PDF, XPS-Multi/Single Page |
| Scanning resolution | Note: Some formats may not be available in other modes. 600/400/300/200/150/100 dpi |
| Major features | |
| •2-sided Scan •Image Rotation •Mixed Size Paper Scanning •Scan to Email | |
| •Scan to file (SMB, FTP) •Scan to e-filing •Scan to USB •Preview •WS Scan | |
| •Omit Blank Page •Original Outside Erase | |

| ELECTRONIC FILING FUNCTIONS | |
|-----------------------------|--|
| Number of folders | 100 folders per Box |
| Number of documents | 400 documents per Box/Folder |
| Number of pages | 200 pages per Document |
| Input to box | Copy to Box, Print to Box, Received FAX to Box, Received Internet Fax to Box (w/o Sub Na), Scan to Box |
| Box N/W access applications | TWAIN driver, File Downloader |

| INTERNET-FAX/NETWORK-FAX FUNCTIONS | |
|------------------------------------|-----------------------|
| Compatibility | T.37 (Simple Mode) |
| Drivers | Windows 2000/XP/Vista |

| NETWORK/DEVICE MANAGEMENT UTILITY | |
|--|--|
| •TopAccess •TopAccess DocMon •Address Book Viewer •File Downloader | |
| •Printer Driver Customization (PDC) Tool •e-BRIDGE Color Profiler | |
| •e-BRIDGE Job Separator •e-BRIDGE Job Build | |

DISTRIBUTED BY

| OPTIONS | |
|-------------------------------|---|
| Finisher MJ-1103 | Non-sort/Sort/Staple Sort/Group/Manual Staple/Hole-Punch (opt.) |
| Speed (A4) | Colour: 55/65/65 ppm, B&W: 55/65/75 ppm |
| Capacity (80gm ²) | Stational Tray: Approx. 250 sheets (A4, B5, A5R), Approx. 125 sheets (A4R, B4, A3, B5R, FOLIO) Finishing Tray: Approx. 3,000 sheets (A4, B5), Approx. 1,500 sheets (A4R, B4, A3, B5R, FOLIO) Finishing Tray: Approx. 150 sets or 2,000 sheets (A4, B5), Approx. 75 sets or 1,000 sheets (A4R, B4, A3, FOLIO) 617 x 603 x 1,085mm Approx. 40.0kg |
| Staple | |
| Dimensions (W x D x H) | |
| Weight | |
| Finisher MJ-1104 | Non-sort/Sort/Staple Sort/Group/Manual Staple/Hole-Punch (opt.) |
| Speed (A4) | Colour: 55/65/65 ppm, B&W: 55/65/75 ppm |
| Capacity (80gm ²) | Stational Tray: Approx. 250 sheets (A4, B5, A5R), Approx. 125 sheets (A4R, B4, A3, B5R, FOLIO) Finishing Tray: Approx. 3,000 sheets (A4, B5), Approx. 1,500 sheets (A4R, B4, A3, B5R, FOLIO) Finishing Tray: Approx. 150 sets or 2,000 sheets (A4, B5), Approx. 75 sets or 1,000 sheets (A4R, B4, A3, FOLIO) 617 x 603 x 1,085mm Approx. 40.0kg |
| Staple | |
| Saddle stitch | |
| Dimensions (W x D x H) | |
| Weight | |
| Hole Punch Unit MJ-6102 | |
| Dimensions (W x D x H) | 112 x 573 x 323 mm |
| Weight | Approx. 7.0 kg |
| Finisher Guide Rail KN-1103 | |

| | |
|-----------------------------------|-----------------------------------|
| Staple STAPLE-2400 | |
| Staple STAPLE-3100 | |
| Large Capacity Feeder MP-2501A | |
| Paper supply (80gm ²) | Approx. 2,500 sheets |
| Paper size | A4 (64 — 256 g/m ²) |
| Dimensions (W x D x H) | 360 x 552 x 542 mm (LCF only) |
| Weight | 28.5 kg |
| EFI Controller GA-1310* | |
| FAX Unit GD-1270AS/NA | |
| Compatibility | Super G3, G3 |
| Number of lines | 1 line (2nd line is optional) |
| Modem speed | Max. 33.6k bps |
| Data compression method | JBIG, MMR, MR, MH |
| Communication protocols | ITU-T T.30 |
| Transmission speed | Approx. 3 sec. per page |
| Scanning mode | Text, Text/Photo, Photo, B&W only |
| Gray scale | 256 steps |

| | |
|-------------------------|--------------------|
| Hole Punch Unit MJ-6102 | |
| Dimensions (W x D x H) | 112 x 573 x 323 mm |
| Weight | Approx. 7.0 kg |

| | |
|-----------------------------------|---------------------------------|
| Finisher Guide Rail KN-1103 | |
| Staple STAPLE-2400 | |
| Staple STAPLE-3100 | |
| Large Capacity Feeder MP-2501A | |
| Paper supply (80gm ²) | Approx. 2,500 sheets |
| Paper size | A4 (64 — 256 g/m ²) |
| Dimensions (W x D x H) | 360 x 552 x 542 mm (LCF only) |
| Weight | 28.5 kg |




| | |
|-------------------------|-----------------------------------|
| EFI Controller GA-1310* | |
| FAX Unit GD-1270AS/NA | |
| Compatibility | Super G3, G3 |
| Number of lines | 1 line (2nd line is optional) |
| Modem speed | Max. 33.6k bps |
| Data compression method | JBIG, MMR, MR, MH |
| Communication protocols | ITU-T T.30 |
| Transmission speed | Approx. 3 sec. per page |
| Scanning mode | Text, Text/Photo, Photo, B&W only |
| Gray scale | 256 steps |

| | |
|---|--|
| 2nd Line for FAX Board GD-1260AU/NA | |
| Wireless LAN Module GN-1050 | |
| Antenna GN-3010 | |
| Harness Kit for Coin Controller GQ-1200 | |
| Data Overwrite Enabler GP-1070 | |
| e-BRIDGE ID Gate KP-2004 for HID | |
| e-BRIDGE ID Gate KP-2005 for MIFARE | |
| Imaging Acceleration Board GE-1170 | |
| Meta Scan Enabler GS-1010 | |
| IPSec Enabler GP-1080 | |
| External Interface Enabler GS-1020 | |
| Insertor Unit MJ-7003* | |

| | |
|---|--|
| *Available in 2009 | |
| ISO 9001 and ISO 14001 Certifications | |
| These highly acclaimed certifications are recognised worldwide as measures of top quality and environmental management excellence. They are awarded to manufacturers for facilities and practices meeting strict standards set by the Geneva based International Standardization Organization. To date, four copier sales affiliates and all Toshiba TEC manufacturing facilities where copiers, accessories, supplies and parts are produced have received ISO 9001 certification, while four copier sales affiliate and all Toshiba TEC manufacturing facilities have received ISO 14001 certification — even more reasons to count on Toshiba. | |
| Microsoft and Windows® are registered trademarks of Microsoft Corporation in the United States and/or other countries. Adobe® PostScript® Level 3™ is a registered trademark of Adobe Systems, Inc. Mac OS® is a registered trademark of Apple Inc. EFI, Fiery and the Fiery logo are registered trademarks of Electronics for Imaging, Inc. in the U.S. Patent and Trademark Office and/or certain other foreign jurisdictions. All other brand and/or product names are trademarks of their respective owners. | |
| This brochure was compiled based on information that was accurate prior to product launch. Product design and specifications are subject to change without notice. The colour(s) of the actual product may vary from the colour(s) shown in this brochure. No part of this material may be used or reproduced in any manner whatsoever without permission. 1 GB is equivalent to 1 billion bytes. Days for function availability may differ by region. "e-filing" is an abbreviation of "electronic filing." Warm-up time and print speed may vary depending on the operating environment. The products shown in this brochure emit weak electromagnetic waves and magnetism. If anyone wearing a pacemaker feels anything abnormal near one of these products, he or she should leave the product and consult a medical professional. ©2008 TOSHIBA TEC CORPORATION All rights reserved. | |
| As an ENERGY STAR Partner TOSHIBA TEC CORPORATION has determined that this multifunctional device model meets the ENERGY STAR guidelines for energy efficiency. | |

| ISO 9001 and ISO 14001 Certifications | |
|---|--|
| These highly acclaimed certifications are recognised worldwide as measures of top quality and environmental management excellence. They are awarded to manufacturers for facilities and practices meeting strict standards set by the Geneva based International Standardization Organization. To date, four copier sales affiliates and all Toshiba TEC manufacturing facilities where copiers, accessories, supplies and parts are produced have received ISO 9001 certification, while four copier sales affiliate and all Toshiba TEC manufacturing facilities have received ISO 14001 certification — even more reasons to count on Toshiba. | |
| Microsoft and Windows® are registered trademarks of Microsoft Corporation in the United States and/or other countries. Adobe® PostScript® Level 3™ is a registered trademark of Adobe Systems, Inc. Mac OS® is a registered trademark of Apple Inc. EFI, Fiery and the Fiery logo are registered trademarks of Electronics for Imaging, Inc. in the U.S. Patent and Trademark Office and/or certain other foreign jurisdictions. All other brand and/or product names are trademarks of their respective owners. | |
| This brochure was compiled based on information that was accurate prior to product launch. Product design and specifications are subject to change without notice. The colour(s) of the actual product may vary from the colour(s) shown in this brochure. No part of this material may be used or reproduced in any manner whatsoever without permission. 1 GB is equivalent to 1 billion bytes. Days for function availability may differ by region. "e-filing" is an abbreviation of "electronic filing." Warm-up time and print speed may vary depending on the operating environment. The products shown in this brochure emit weak electromagnetic waves and magnetism. If anyone wearing a pacemaker feels anything abnormal near one of these products, he or she should leave the product and consult a medical professional. ©2008 TOSHIBA TEC CORPORATION All rights reserved. | |
| As an ENERGY STAR Partner TOSHIBA TEC CORPORATION has determined that this multifunctional device model meets the ENERGY STAR guidelines for energy efficiency. | |

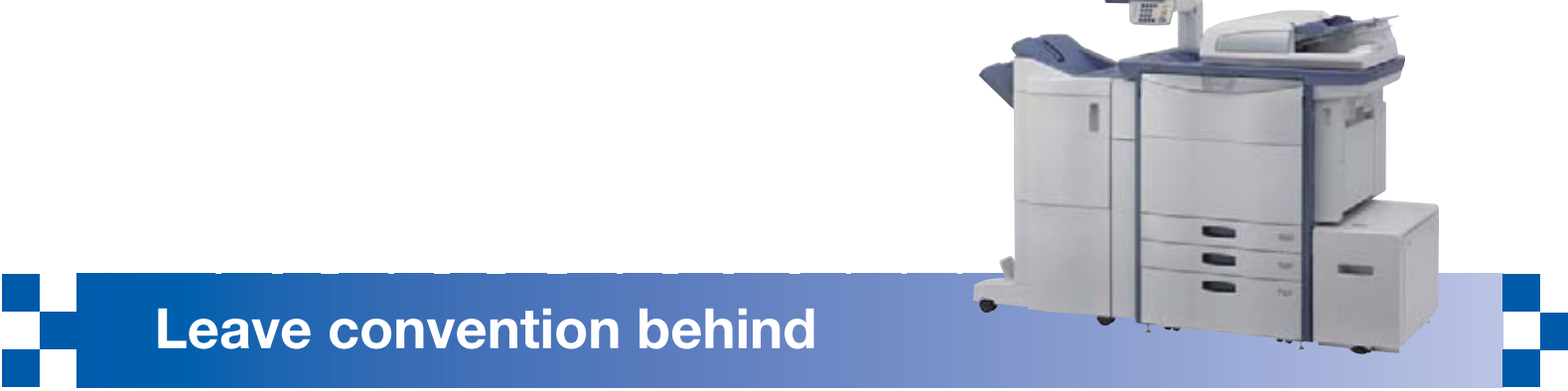
DISTRIBUTED BY

| | |
|--|---|
| TOSHIBA |    |
| TOSHIBA SINGAPORE Pte., Ltd. | |
| 438B Alexandra Road, #06-01, Alexandra Technopark, | |
| Singapore 119968 | |
| Tel: (65) 6275 0255 Fax: (65) 6275 0482 | |
| http://www.estudio.com.sg | |

| | |
|--|--|
| TOSHIBA | |
| TOSHIBA SINGAPORE Pte., Ltd. | |
| 438B Alexandra Road, #06-01, Alexandra Technopark, | |
| Singapore 119968 | |
| Tel: (65) 6275 0255 Fax: (65) 6275 0482 | |
| http://www.estudio.com.sg | |

| | |
|------------------------|--|
| TOSHIBA | |
| Leading Innovation >>> | |

| | |
|---|--|
| High-speed colour document system | |
|  | |

| | |
|--|--|
|  | |
|--|--|

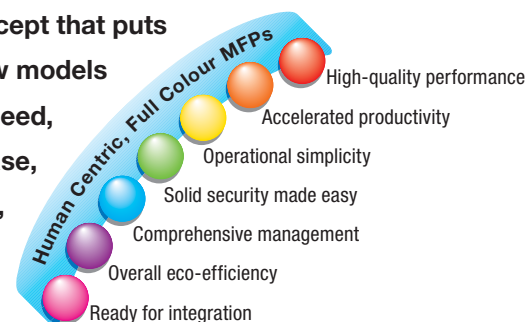
| | |
|-------------------------|--|
| Leave convention behind | |
|-------------------------|--|

| | |
|---|--|
|  | |
|---|--|



Toshiba innovation establishes a new colour standard.

Toshiba introduces the new e-STUDIO5520C/6520C/6530C — accelerated full-colour MFPs. Designed based on Toshiba's unique Human Centric concept that puts users at the center of MFP research and development, these new models satisfy users and administrators alike through unprecedented speed, productivity, image quality, outstanding reliability, operational ease, security, TCO(Total Cost of Ownership), management, quietness, eco efficiency and system integration. In short, they establish a new benchmark for document production.



e-STUDIO5520c
Full colour: 55ppm B/W: 55ppm

e-STUDIO6520c
Full colour: 65ppm B/W: 65ppm

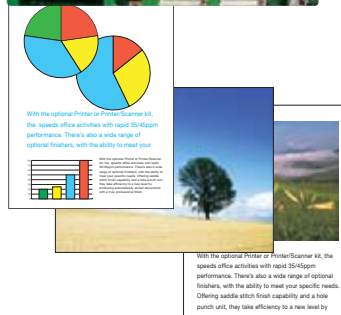
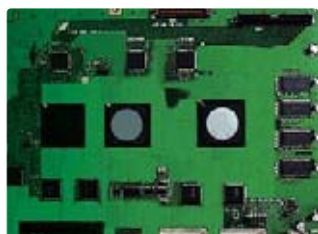
e-STUDIO6530c
Full colour: 65ppm B/W: 75ppm





High-quality performance

Extremely high image quality is only one facet of high-quality performance. To meet the demands of business professionals, a high-speed, full-colour MFP must also accommodate various expectations and dependably achieve desired results with utmost ease. For Toshiba, this is the definition of high-quality performance.



Toshiba's advanced image processing technology, e-TAIP Technology, is your assurance of excellent image output stability and quality.

Output approaching offset printing quality is maintained even during high-volume jobs, thanks to Toshiba's digital image processing technology. Image quality is extremely stable and new toner ingredients are blended exclusively for vivid results.

Newly developed toner ingredients are blended exclusively for vivid results.

1200dpi printing, in addition to 600dpi printing, is provided for sharper reproduction of thin lines in line drawings and text.

Note: Compatible with PostScript only.

Toshiba's ERU (Easy Replaceable Unit) design and longer lasting consumables reduce downtime and increase productivity while supporting high-quality performance and excellent reliability.

The SR (Self Refresh) Developing System automatically and constantly replenishes the developer during operation to ensure consistently high image quality.

The Outside Erase function automatically detects and removes the dark areas that often appear near the edges when copying/scanning books and other thick materials. This not only achieves sharper results, but saves unnecessary toner.

The Omit Blank Page function automatically identifies blank pages mixed in with the original when copying/scanning and skips the blank pages in the output or data storage – all without the need for extra software.

Note: This function is off by default.

The ICC profile allows customisation of colour conversion that precisely meets your needs (without the help of service personnel) when printing from a PC.

An optional EFI controller (to be made available) meets the needs of creative professionals.

Versatile paper handling extends to a wide range of paper choices

| | |
|---------------------------------|--|
| Drawer: | 320x460mm-A5R, 64 – 256gm ² |
| Stack Feed Bypass (multi-feed): | 330 x 482mm – A6R, 64 – 300gm ² |
| Duplex: | 320 x 460mm – A5R, 64 – 256gm ² |
| Banner (from SFB): | 313 x 1200mm, 64 – 163gm ² |
| Other paper: | Waterproof paper (two-sided printing/banner printing), tab paper printing (from SFB), tab paper insertion (from SFB) |

Other features

- Background Adjustment •One Touch Adjustment (Warm/Cool/Vivid/Clear/Highlighter Pen) •Sharpness
- Twin Colour Copy



Accelerated productivity

High productivity means smooth, speedy performance from initial input to final output as well as advanced features that meet user expectations without compromise. This is the kind of accelerated productivity you can expect from the revolutionary e-STUDIO5520C/6520C/6530C.

Print, copy and scan speeds (pages per minute, A4):

| | Copy output/Print output | | Scan for scanning functions (All Colour mode) |
|---------------|--------------------------|-----|--|
| | Full Colour | B/W | |
| e-STUDIO5520C | 55 | 55 | up to 77 (300dpi) |
| e-STUDIO6520C | 65 | 65 | |
| e-STUDIO6530C | 65 | 75 | |

Toshiba's 3rd generation e-BRIDGE controller features a 1.2GHz PowerPC CPU, 2GB of RAM, Gigabit Ethernet (1000BASE-T), an 80GB HDD, and the latest image/data processing ASICs. This architecture enables advance functions, dramatic interface improvements, and easy system integration.

CMYK toner units and paper in the new tandem LCF (Large Capacity Feeder) can be replenished on the fly, without stopping the machine, to ensure reduced downtime.

Newly developed Toshiba finishers run quietly while offering a diverse range of finishing options. The Multi-Staple finisher employs Toshiba's original Active Drop Technology to slash processing time for continuous stapling, including dual position stapling. It also has a Manual Stapling function that allows re-stapling of originals after separating the pages for copying. The Hole Punch incorporates Two-dimensional Resister technology to ensure accurate hole punching, even during high-speed output.

The standard RADF offers highly productive dual-sided original scanning that is nearly the same speed as single-sided jobs.

Dual-sided copying and printing are accomplished at nearly the same speed as single-sided jobs for outstanding productivity.

Other features

- e-filing features: Print to Box, Receive FAX to Box, Copy & Box, Scan to File & Box, Box to Print, etc.





Operational simplicity

Operational ease begins with intuitive controls. It continues with processing and finishing features that satisfy wide-ranging needs. For an MFP to be Human Centric, it must simplify paper handling, printing, and all aspects of document production. This is what Toshiba has achieved in the e-STUDIO5520C/6520C/6530C.



The large new 10.4" SVGA TFT colour touch panel allows at-a-glance confirmation of settings and scanning results.

Using the Scan Preview function, users can view previously scanned images on the control panel prior to scanning.



The new user interface lets authorized users customize personal menu screens to complete tasks in fewer steps. Templates are also easy to create and access, contributing to user-friendly operation.

The USB Direct Print/Scan to USB function can print data from an inserted USB storage device or save scanned documents/images on the device. Compatible formats include PDF, TIFF*, JPEG, XPS, and Slim PDF. *Some restrictions may apply.



A new, more intuitive printer driver interface and improved TopAccess web-based utility further simplify operation.

Paper size is automatically detected in the paper cassettes.

Ergonomically designed cassette handles make paper replenishment extremely easy.

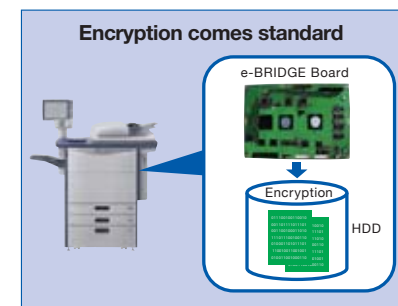
Other features

•TopAccess DocMon •Addressbook Viewer •Wireless LAN (optional)



Solid security made easy

Solid security measures are increasingly in demand. However, security becomes impractical if advanced security features make access too complex. At Toshiba, high security is achieved without adding complexity. This is the way security was meant to be.



The standard AES (Advanced Encryption Standard) helps discourage DoS (Denial of Service) attacks.

The Private Print function sets the e-STUDIO to start printing following the input of a password on the control panel. This is ideal for printing highly confidential documents.

All TCP/IP networked communications equipment (routers, PCs, etc.) are monitored and controlled by protocol.

The Hardcopy Security Printing feature can help discourage unauthorized copying by inlaying security patterns on unauthorized copies. Note: To activate this function, please contact your Toshiba service technician.

While the user authentication function is activated, you can command output without inputting user authentication or Private Print passwords on the MFP control panel by utilising e-Bridge ID Gate (optional), an MFP proximity card authentication system.

Optional IPsec (Security Architecture for Internet Protocol) employs packet data encryption to prevent unauthorized Internet access.

An optional data overwrite enabler prevents actual data in the MFP's HDD from being leaked.

Compliant with ISO/IEC 15408 EAL3.

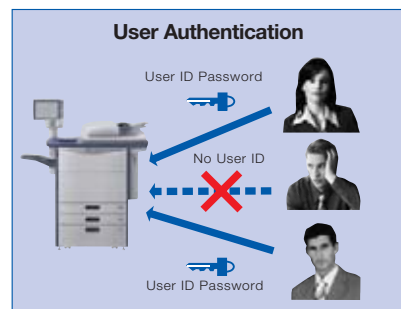
Other features

•Private Print •MAC Address Filtering (10 sets) •Account Code (10,000 kinds)



Comprehensive management

MFP management encompasses everything from user refurbishment of consumables to network administration. Through advanced management features and long-lasting consumables, excellent running stability and low TCO can be achieved. Such comprehensive, highly efficient management is made possible by the new STUDIO5520C/6520C/6530C.



The Role Based Access Control function allows the administrator to decide which MFP capabilities, such as printing, copying and scanning, are available to each user. This makes it much easier to grasp output costs for more effective management.

An Import/Export function for Printer Driver Settings allows the administrator to make necessary printer driver settings on one networked computer and then apply the settings to all other computers by simply importing/exporting the file.

With the Cloning function, you can back up and store various data such as user data, setup data and SRAM data in a USB storage device. When multiple e-STUDIOS are installed in your office, simply insert the USB storage device to add the data and eliminate the need to set up each e-STUDIO individually. This function is also helpful in the unlikely event that your e-STUDIOS need to be re-setup.

The enhanced reliability of e-STUDIOS maximises uptime, making them available to users whenever needed. This reliability, together with longer-lasting consumables such as a larger waste toner box, leads to a reduction in TCO.

The Meta Scan function allows easy support for Meta Data (XML) that helps streamline the workflow by allowing connectivity with external systems and applications.

The SR Developing system contributes to a drastic cut in both maintenance time and costs.

Other features

- Guest Account Setting •Department Code (1,000 kinds)



Overall eco-efficiency

Eco-efficiency cannot be measured by compliance with environmental standards alone. To be truly eco-efficient, an MFP must also run quietly, employ halogen-free materials, and provide a power saving mode that lowers energy consumption. Such performance — delivered by the e-STUDIO5520C/6520C/6530C — is beneficial to both users and the environment.



Compliant with the Energy Star Program.

Sleep mode (selectable with a setting of 3 to 240 min.) for energy savings.

Based on RoHS Requirements of the European Union, this product is free of environmentally harmful materials such as lead or cadmium.

Low-temperature fusing toner contributes to reduced energy consumption.

Toshiba IH fuser technology accelerates warm-up time, lowers energy consumption, and reduces running costs.



Environmental responsibility

Toshiba aims to contribute to sustainable development in two ways: by supporting environmentally friendly values and by reducing the environmental impact of its products and business practices. Toshiba strives to be eco-friendly in all activities including procurement of raw materials and components, product design, production, and distribution. In line with this policy, Toshiba's environmentally friendly MFPs feature recycled materials and are highly efficient with energy and other resources.



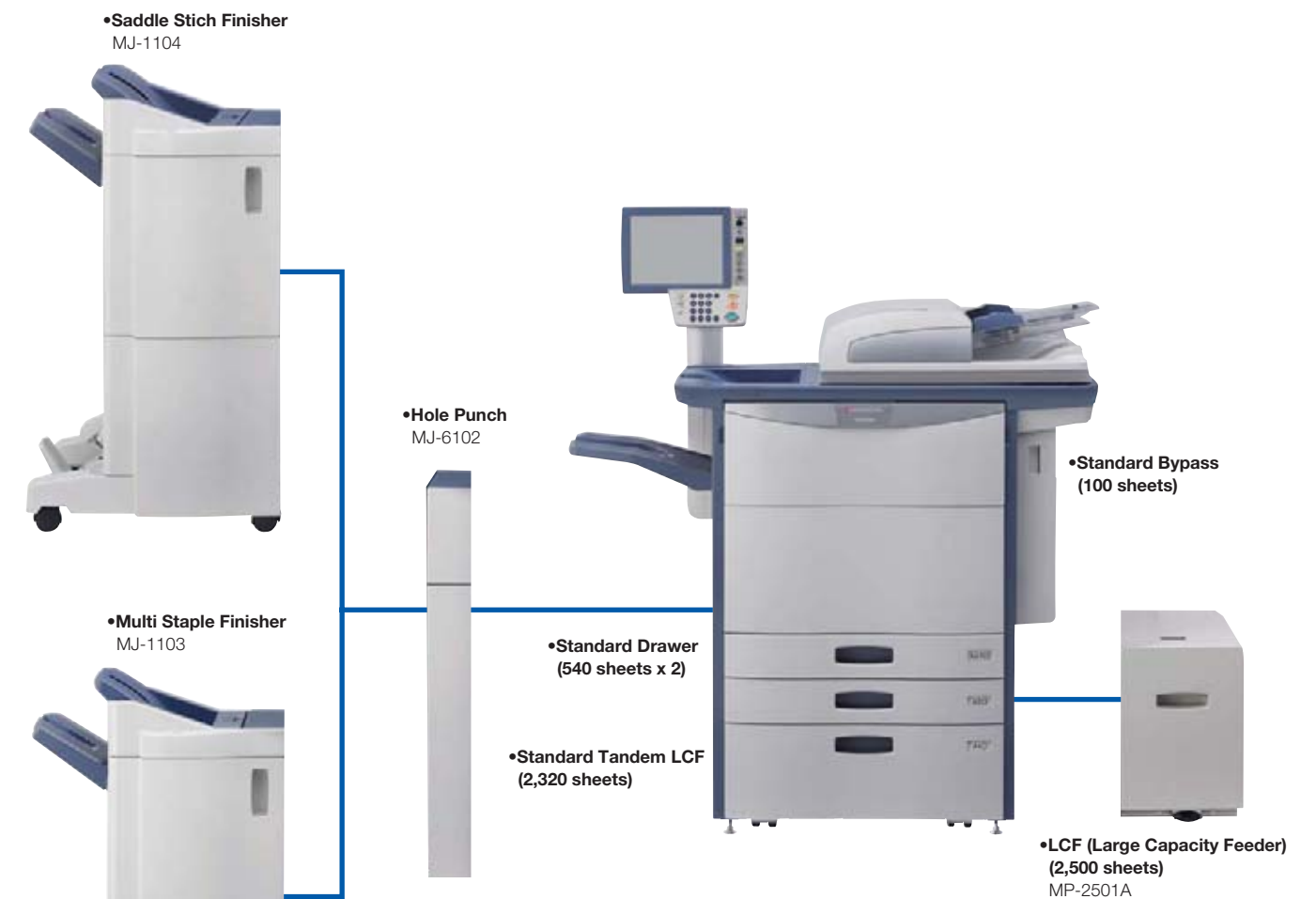
Ready for integration

Even advanced MFPs are of little use to workgroups if they don't integrate with existing network environments. The open architecture of Toshiba's new e-STUDIO models enables easy integration in wide-ranging working environments. This is what being ready for integration is all about.



- The open architecture expands connectivity and simplifies integration within existing network environments.
- Integration with external solutions is easy and smooth due to the following features:
 - e-Bridge Open Platform enables compatibility with third-party applications.
 - The Meta Scan function allows attachment of additional information (XML data) to files when using scan to functions or file scanning. The attached data can be accessed by external workflow systems.
 - DPWS (Device Profile for Web Service) protocol simplifies connection and identification of networked devices.
 - The optional EFI controller supports the workflow of those using EFI applications popular in graphic arts production environments.
 - e-BRIDGE application software (e-BRIDGE Job Separator and e-BRIDGE Job Build) and system solutions (Re-Rite) are available.
 - Certified for Windows Vista™
Compatible with the XPS (XML Paper Specification) document printing standard on Windows Vista, and WS Scan functions that conform to DPWS protocol, e-STUDIOS deliver highly efficient printing and scanning functions.

Options



- | | |
|-------------------------------------|--|
| •Staple Cartridge STAPLE-3100/2400 | •Antenna GN-3010 |
| •Finisher Guide Rail KN-1103 | •Data Overwrite enabler GP-1070 |
| •EFI Controller GA-1310* | •e-BRIDGE ID Gate KP-2004/2005 |
| •Inserter Unit MJ-7003* | •Imaging Acceleration Board GE-1170 |
| •FAX Unit GD-1270AS/NA | •Meta Scan enabler GS-1010 |
| •2nd Line for FAX Unit GD-1260AU/NA | •External Interface enabler GS-1020 |
| •Wireless LAN Module GN-1050 | •IPSec enabler GP-1080 |
| | •Harness kit for Coin Controller GQ-1200 |

*Available in 2009

Full Colour MFP line up



Note: Model availability varies by region.