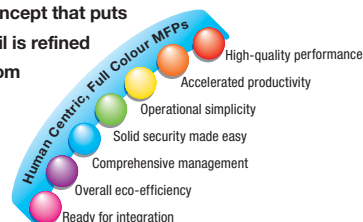




Unwavering full-colour performance for business needs.

New Toshiba e-STUDIO2330c/2820c/3520c/4520c full-colour MFPs streamline your everyday workflow. Based on Toshiba's unique Human Centric concept that puts users at the center of MFP research and development, every detail is refined to achieve high performance with ease. The full lineup ranging from 23ppm to 45ppm answers diverse business needs. Discover the advantages of high image quality, outstanding reliability, steady input/output productivity, operational simplicity, solid security, excellent eco-efficiency, and easy integration. Toshiba exists to meet the real needs of real people.



e-STUDIO2330c

Full colour: 23ppm B/W: 28ppm

e-STUDIO2820c

Full colour: 28ppm B/W: 28ppm

e-STUDIO3520c

Full colour: 35ppm B/W: 35ppm

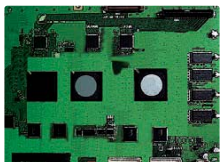
e-STUDIO4520c

Full colour: 45ppm B/W: 45ppm



High-quality Performance

Toshiba MFPs deliver impressive reliability and the utmost in image quality, without sacrificing speed or ease of maintenance. They ensure all your needs are fully and consistently met.



- Toshiba's advanced image processing technology, e-TAIP Technology, is your assurance of impressive image output stability and quality.
- Output approaching offset printing quality is maintained even during high-volume jobs, thanks to Toshiba's digital image processing technology. Image quality is extremely stable and new toner ingredients are blended exclusively for vivid results.
- The Outside Erase function automatically detects and removes the dark areas that often appear near the edges when books and other thick materials are being copied/scanned. This will result in sharper images, neater output and also reduce toner usage.
- The Omit Blank Page function automatically identifies blank pages amongst a set of original documents that are being copied/scanned. Blank pages are omitted in the output or data storage – all without the need of extra software. *This function is off by default.
- Uptime and productivity are increased by an ERU (Easy Replaceable Unit) design and longer-lasting consumables.
- The ICC profile allows customisation of colour conversion that precisely meets your needs when printing from a PC.
- A multitasking document system with optional EFI controller.

Versatile paper handling extends to a wide range of paper choices

Drawer:	A3 – A5R, 64 – 256gm ²
Stack Feed Bypass (multi-feed):	320 x 460mm – A6R, 64 – 280gm ²
Duplex:	A3 wide (305 x 457mm) – A5R, 64 – 256gm ²
Banner (from SFB):	305 x 1200mm, 64 – 163gm ²
Other paper:	Waterproof paper (two-sided printing/banner printing), tab paper printing (from SFB), tab paper insertion (from SFB)

Other features

- Background Adjustment • One Touch Adjustment (Warm/Cool/Vivid/Clear/Marker) • Sharpness
- Twin Colour Copy

Operational Simplicity

Toshiba MFPs offer large control panels and countless refinements that simplify every job for every user. They free you from the frustrations of unintuitive operation.

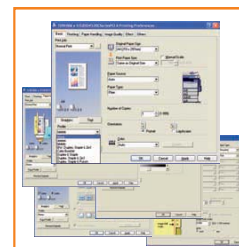
- The easy-to-read 8.5" WVGA touch panel employs a tilt-adjustable design for excellent visibility.



- Using the Scan Preview function, users can view previously scanned images on the control panel prior to scanning.
- The new user interface allows authorized users to customize personal menu screens to complete tasks in fewer steps. Templates are also easy to create and access, contributing to user-friendly operation.
- The USB Direct Print/Scan to USB function can print data from an inserted USB storage device or save scanned documents/images on the device. Compatible formats include PDF, JPEG, Slim PDF* and XPS. *Some restrictions may apply.
- Operation is further simplified by a new, more intuitive printer driver interface and TopAccess web-based utility.
- Even the paper cassette handles are designed to simplify the operation.
- A newly developed waste toner box that is twice the regular size* of previous model with improvement ease of handling. *In comparison with conventional full colour models.

Other features

- TopAccess DocMon • Addressbook Viewer • Wireless LAN (optional) • Bluetooth (Optional)



Comprehensive Management



Toshiba MFPs deliver friendly, efficient functions for administrators and users that enhance job management yet, drastically reduce TCO (Total Cost of Ownership).

The Role Based Access Control (RBAC) function allows the administrators to administrate MFP capabilities, such as printing, copying, scanning and faxing to make available to each user. It is an effective means of access control for largescale organizations/sytems to monitor output costs for more effective management

An Import/Export function for Printer Driver Settings allows administrator to make necessary printer driver settings on one networked computer and then apply the settings to other computers by simply importing/exporting the file.

With the Cloning function, you can back up and store various data such as user data and setup data in a USB storage device. When multiple e-STUDIOs are installed in your office, simply insert the USB storage device to add the data and eliminate the need to set up on individual e-STUDIO MFP.

*To activate this function, please contact your Toshiba service technician.

The Easy Replaceable Unit (ERU) design minimises unproductive downtime through speedy recovery time. This reliability, together with long-lasting consumables such as a larger waste toner box, leads to a reduction in TCO.

The Meta Scan function allows easy support for Meta Data (XML) that helps streamline the workflow by allowing connectivity with external systems and applications.

Other features

- Guest Account Setting • Department Code (1,000 kinds)

Driven by



Accelerated Productivity

At Toshiba, every detail is refined to enhance your workflow. High print/scan speed, for example, contribute to excellent productivity. You can be sure of smooth, time-saving operation and accelerated performance throughout the process.

Print, copy and scan speed (pages per minute, A4):

	Print output/Copy output		Scan for scanning functions (All Colour mode)
	Full Colour	B/W	
e-STUDIO2330C	23 ppm	28 ppm	up to 57 spm (300dpi)
e-STUDIO2820C	28 ppm	28 ppm	
e-STUDIO3520C	35 ppm	35 ppm	
e-STUDIO4520C	45 ppm	45 ppm	

Advanced new functions, impressive interface improvements, and easier system integration are made possible by Toshiba's new 3rd generation e-BRIDGE controller, that features with 866MHz CPU, 1.0GB Main memory, 512MB Page memory, Ethernet (10/100Base T), an 80GB HDD, and the latest image/data processing ASICs.

Three types of highly reliable finishers provide a diverse range of finishing options. The optional Multi-Staple Finisher (MJ-1101) employs Toshiba's original Active Drop Technology to slash processing time for continuous stapling, including dual position stapling. It also has a manual stapling function that allows re-stapling of originals after separating the pages for copying. The optional hole punch incorporates Two-dimensional Resister Technology to ensure dependably accurate hole punching, even with high-speed output (not available on MJ-1031 Hanging Finisher).

The optional RADF offers highly productive dual-sided original scanning that has similar speed as single-sided jobs.

The Slim PDF function offers the ability to reduce data volume when dealing with full-colour originals and other high-volume data.

The optional Imaging Acceleration Board, with built-in Media Processor, improves performance when creating Slim PDFs.

Other features

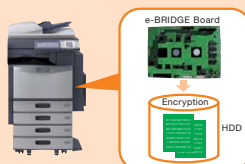
- e-filing features: Print to Box, Received FAX to Box, Copy & Box, Scan to File & Box, Box to Print, etc.



Solid Security Made Easy

By focusing on user-friendliness and user needs, Toshiba found a solution that strikes the right balance between security protection and easy operation. Count on Toshiba for solid security made easy.

Encryption comes standard



- The standard AES (Advanced Encryption Standard) prevents DoS (Denial of Service) attacks.
- The Private Print function enables users to print confidential documents by inputting a password (set by the user via printer driver) on the control panel.
- All TCP/IP networked communications equipment (routers, PCs, etc.) are monitored and controlled by protocol.

The Hardcopy Security Printing feature helps to prevent unauthorised copying by inlaying security patterns on unauthorized copies.

*To activate this function, please contact your Toshiba service technician.

While the user authentication function is activated, you can command output without inputting user authentication or Private Print passwords on the MFP control panel by utilising e-Bridge ID Gate (optional), or an MFP iClass card authentication system.

*For a list of compatible models, please inquire at your local dealer.

Optional IPsec (Security Architecture for Internet Protocol) employs packet data encryption to prevent unauthorized Internet access.

An optional Data Overwrite enabler prevents actual data in the MFP's HDD from being stolen.

Compliant with ISO/IEC 15408 EAL3.

Other features

- Private Print • MAC Address Filtering (10 sets) • Account Code (10,000 kinds)



Overall Eco-efficiency

Toshiba MFPs offer compliance with strict environmental standard as well as a significant reduction in power consumption. They are friendly to both people and the environment.



To be fully compliant with the Energy Star Program, Blue Angel Mark* and RoHS. *Does not apply to e-STUDIO4520c.

Sleep mode (with selectable preset ranging from 3 to 240 min.) for energy savings.

Based on RoHS Requirements of the European Union, this product is free from halogen.

Low-temperature fusing toner contributes to the reduction of energy consumption.

Environmental responsibility

Toshiba aims to contribute to sustainable development in two ways: by supporting environmentally friendly values and by reducing the environmental impact of its products and business practices. Toshiba strives to be eco-friendly in all activities including procurement of raw materials and components, product design, production and distribution. In line with this policy, Toshiba's environmentally friendly MFPs feature recycled materials and are highly efficient with energy and other resources.



Ready for Integration

Thanks to Toshiba MFPs open architectures, you can now rely on stress-free compatibility with the latest network technologies. Toshiba MFPs flexible networking is able to perform with other compatible external networks.

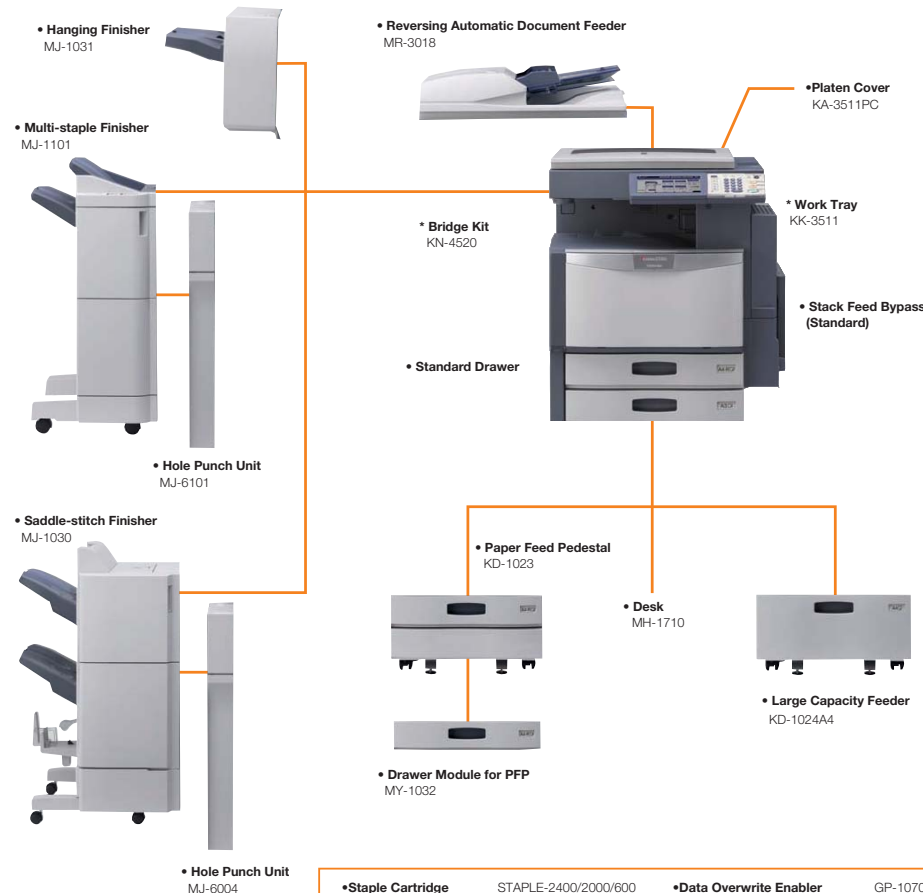
The open architecture expands connectivity and simplifies integration with existing network environments. Integration with external solutions is smooth and easy due to the following features:

- e-BRIDGE EFMS* is the ideal solution for centralised monitoring and administration of Toshiba MFPs. With the system, you are able to easily measure almost everything with regards to device usage or consumption in order to provide timely notifications to users on current and potential device disruptions.
- e-BRIDGE Job Build* gives you total control over your print job by allowing it to combine multiple documents of various file and paper types, and document settings into a single print job.
- e-BRIDGE Job Separator* makes it possible to take a single print job and divide it as required. These are automatically subdivided through the use of separator pages which can also be printed upon.
- e-BRIDGE Drop Zone* improves productivity by creating specific print settings and finishing parameter for different office files into a select drag and drop process. It supports files of MS word, Excel, Powerpoint, PDF & more.
- e-BRIDGE Re-Rite* automatically converts scan documents into digital documents. This improves business process through enhanced productivity, saving precious time and money while transforming your office into a lesser paper usage zone.
- e-BRIDGE Open Platform* facilitates versatile linkage with external applications and systems. It offers 2 types of open interfaces for quick and easy collaboration with solutions partners: External Interface Enabler and Meta Scan Enabler.
- e-BRIDGE Job Replicator* distributes documents to multiple sources automatically, saving time and reducing workload in the process. With just a few clicks through a simple interface, documents can be printed to more than one drawer or input source at the same time.
- e-BRIDGE Job Point* is an utility that allows users to print large print jobs within a short period of time. Straight forward and easy-to-use, Job Point automates the process of printing the same document to multiple Toshiba MFPs with a single print job, cutting down the time to complete the job by half or more.

*For details, please inquire at your local dealer or distributor.



Options



• Staple Cartridge	STAPLE-2400/2000/600	• Data Overwrite Enabler	GP-1070
• EFI Controller	GA-1211	• e-BRIDGE ID Gate	KP-2004/2005
• FAX Unit	GD-1250	• Imaging Acceleration Board	GE-1170
• 2nd Line for FAX Unit	GD-1260	• Meta Scan Enabler	GS-1010
• Wireless LAN Module	GN-1050	• External Interface Enabler	GS-1020
• Bluetooth Module	GN-2010	• IPsec Enabler	GP-1080
• Antenna	GN-3010	• Harness Cable for External Device	GQ-1110

Full Colour MFP line up

e-STUDIO2330c Full colour: 23ppm B/W: 28ppm	e-STUDIO2820c Full colour: 28ppm B/W: 28ppm	e-STUDIO3520c Full colour: 35ppm B/W: 35ppm	e-STUDIO4520c Full colour: 45ppm B/W: 45ppm	e-STUDIO5520c Full colour: 55ppm B/W: 55ppm	e-STUDIO6520c Full colour: 65ppm B/W: 65ppm	e-STUDIO6530c Full colour: 65ppm B/W: 75ppm

Note: Model availability varies by region.