

		Color Series		Monochrome Series	
		FS-C8020MFP	FS-C8025MFP	FS-6025MFP/B (Platen) FS-6025MFP	FS-6030MFP
		Main Specifications			
Writing Method		Semiconductor laser			
CPU		PowerPC464 800MHz			
Print Speed	Simplex Duplex	20/20 ppm [A4/Letter] 16/16 ppm[A4/Letter]	25/25 ppm [A4/Letter] 20/20 ppm [A4/Letter]	25/25 ppm [A4/Letter] 19/19 ppm [A4/Letter]	30/30 ppm [A4/Letter] 24/24 ppm [A4/Letter]
First Print Time	10.0 sec. or less in Mono / 23.0 sec. or less in Color			10.0 sec. or less	
Warm up time	Recovery from sleep 23 seconds or less			Recovery from sleep 15 seconds or less	
Resolution	600 dpi			Fast 1,200 dpi, 600 dpi	
Control Panel	4.3" Color Touch Panel				
PDL	PRESCRIBE				
Main Memory	1,024MB standard [Max. 2048MB]			512MB Standard [Max. 1536MB]	
Interfaces	1000BASE-T (optional) /100BASE-TX/10-BASE-T, USB Host, USB 2.0				
Paper Weight	Standard Tray: 60 to 256 g/m <sup>2</sup> ; MP Tray: 60 to 256g/m <sup>2</sup> Standard Tray: 52 to 163 g/m <sup>2</sup> ; MP Tray: 52 to 256 g/m <sup>2</sup>				
Paper Capacity	Standard Maximum	1 x 500 sheets + 100 sheets [MP Tray] 1,600 sheets [With PF-471]			
Paper Size	Cassette: A3 to A5R ; MPT: A3 to A6R				
Media Types	Plain; Rough; Vellum; Recycled; Preprinted; Bond; Color; Pre-punched; Letter Head; Thick; Coated; High Quality; Custom 1-8 [MP Tray: Transparency; Labels; Cardstock; Envelop; Coated]			Plain; Rough; Vellum; Recycled; Preprinted; Bond; Color; Pre-punched; Letter Head; Thick; Coated; High Quality; Custom 1-8 [MP Tray: Transparency; Labels; Cardstock; Envelop]	
External Dimensions (W x D x H)	590mm x 590mm x 754mm			DP Model [590mm x 590mm x 694mm] Platen Model [590mm x 590mm x 587mm]	DP Model [590mm x 590mm x 694mm]
Weight	80kg			DP Model [50.2kg] Platen Model [44.4kg]	DP Model [50.2kg]
Toner Capacity	[K]12,000 pages; [C/M/Y]6,000 pages			15,000 pages	
PM Cycle	200,000			300,000	
Main Unit Life	600,000			600,000	
Supported Protocol	TCP/IP [IPv4/IPv6]; NetBEUI; LPD; RAW; SMTP; POP3; FTP; SMB; LDAP; SNMP [v1/v3]; HTTP[S]; IPP; IPP over SSL; WSD [Print/Scan]				
		Printer Specifications [Standard]			
Supported OS [Driver & Software]		KX Driver, KX[XPS] Driver, PCL/KPDL/XPS Mini Driver, Status Monitor, KM-NET Admin, KM-NET Viewer, KM-NET for Direct Printing; Windows XP, Server2003/2008, Vista, 7 KPrint: Windows XP, Server2003 Quick Setup: Windows XP, Vista, Server2003/2008 PPD Driver: MAC OS X Version 10.2 or higher			
Duplex Print Function		Standard			
Printing Emulations		PCL6[5e, XL], KPDL3[PostScript3 Equivalent], XPS			
		Scan Specifications [Standard]			
Scan Mode		Color			
Resolution		600 dpi, 400 dpi, 300 dpi, 200 dpi, 200 × 100 dpi, 200 × 400 dpi			
File Format		PDF/JPEG/TIFF/XPS			
Continuous Scan Speed	Mono Color	40 ipm [300/200 dpi], 20 ipm [600/400 dpi]		40 ipm [300/200 dpi], 20 ipm [600/400 dpi] 20 ipm [300/200 dpi], 10 ipm [600/400 dpi]	
Transmission Type		Scan to Email; Scan to FTP; Scan to SMB; WSD Scan; USB Memory			
		Copy Specifications [Standard]			
Resolution	Read / Write	600 x 600 dpi			
Continuous Copy Speed [A4/ Letter]		Color / Mono: 20cpm	Color / Mono: 25cpm	25cpm	30cpm
First Copy Speed		11.7 sec or less in Mono / 13.6 sec. or less in Color		10.0 sec or less	
		Fax Specifications - Fax, Network Fax Function [Optional]			
Transmission Mode		Super G3			
Data Compression		MH/MR/MMR/JBIG			
One Touch Dial		100 entries			
Address Book		200 entries			
Modem Speed		33.6 kbps			
No. of line		Single			
		Standard Option			
Document Processor DP-470 [For FS-6025MFP/ FS-6030MFP]	Paper Weight Feeder Capacity Paper Size	Simplex 45-160 g/m <sup>2</sup> ; Duplex 50-120 g/m <sup>2</sup> 50 sheets or less [50-80 g/m <sup>2</sup> ] A3 [11" × 17"]			
Duplex		Embedded			
Job Separator		Standard			
		Consumables & Maintenance Kit			
Toner Cartridge	[K] TK-899 K, [Y/M/C] TK-899 Y/M/C			TK-479	
Maintenance Kit	MK-895 A, MK-895 B			MK-479, MK-470	

		Additional Options	
Finisher		DF-470 + AK-470 (Hanger type 500 sheets Staple Finisher) Paper Weight: 52-256 g/m <sup>2</sup> ; Staple weight: Less than 90 g/m <sup>2</sup> ; Staple Position (1 staple: front/rear, 2 staples: center)	
Paper Feeder (Cassette)		PF-470 (500 sheets) & PF-471 (500 sheets x 2)	
FAX Kit		FAX System (U)	
IC Card Reader Kit		Card Authentication Kit (B) / (B) AC	
Gigabit Ethernet		IB-50	
USB Keyboard		Optional	



#### KYOCERA MITA Hong Kong Limited

16FL, Mita Centre,  
552-566 Castle Peak Road  
Tuen Wan, N.T., HONG KONG

Phone: (852) 2429-7422  
Fax: (852) 2423-2159  
www.kyoceramita.com.hk

\*KYOCERA does not warrant that any specifications mentioned will be error-free. Specifications are subject to change without notice. Information is correct at time of going to press. All other brand and product names may be registered trademarks or trademarks of their respective holders and are hereby acknowledged.

KYOCERA Business Partner



Color MFP : FS-C8020MFP / FS-C8025MFP  
Monochrome MFP : FS-6025MFP / FS-6030MFP



- ▶ Easy to **OWN**
- ▶ Easy to **USE**
- ▶ Easy to **CONTROL**
- ▶ Easy to **SERVICE**
- ▶ Easy to **GREEN LIFE**



## Printer's New Definition

Low-Cost, Professional Document Output in your compact office



Color MFP  
FS-C8020MFP / FS-C8025MFP

Monochrome MFP  
FS-6025MFP / FS-6030MFP







## A SMART MFP Designed for Today's Business

Designed for dynamic workgroups with the highest demand in productivity, these state-of-the-art MFPs have extremely short first print time and high speed. Each equipped with a USB port, a scanner, a duplex unit and a job separator as standard, these machines inherit Kyocera's fine tradition of ultra-high reliability with Kyocera's technologies and proprietary long life drums, coupled with best-in-class preventive maintenance (PM) schedules set at a minimum of **200,000 Sheets**. These elements lead to minimal services and extensive machine uptime.

### Innovation Made Simple Built by Kyocera Inspired by You

- EASY installation, EASY setup and EASY operation
- Low total cost of ownership in its class
- Print/ Copy speed: up to A4 30 sheets per minute
- Professional print, copy, color scan and fax (optional) functions
- Up to 1,600 sheets paper capacity\*, and the ability to process paper weight up to 256 g/m<sup>2</sup>
- Recommended number of users from 10 to 20
- User-friendly color touch panel with wizard-style navigation
- 360° all-rounded design and low noise emission
- Long life drum and replacement parts providing highest efficiency and reliability
- Flexible service plans meeting different customer needs
- Reversible document processor and job separator as standard
- Specifically designed for small and medium-sized enterprises, ideal for any size of corporations, workgroups and departmental sharing

#### Additional efficiency & cost saving

Reverse automatic document processing\*

#### Give your document the right finish

500 sheets staple finisher

#### Easy to use for everyone

Color touch panel with wizard-type navigation

#### Fast & secure printing

USB port for direct printing

#### Easy to replace

Toner and waste toner box

#### Multitalented versatility

500 sheet cassette with 2 paper feeders  
Intelligent paper sensor to fit paper in different sizes

**DF-470**  
500 sheets Document Finisher

**AK-470**  
Attachment Kit

**PF-470**  
500 sheets x 1 Cassette + Cabinet

**PF-471**  
500 sheets x 2 Cassette

\*Required optional Paper Feeder PF-471

\*\*Image shown: FS-6025MFP/ FS-6030MFP with Document Finisher DF-470, Attachment Kit AK-470 and Paper Feeder PF-471



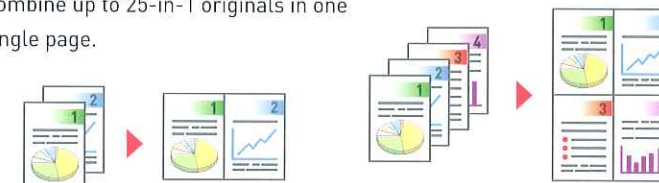
## Professional Functions for Modern Office

### Print & Copy

#### Cost-Saving with Combine Printing and Copying

##### Saving up to 75% of paper!

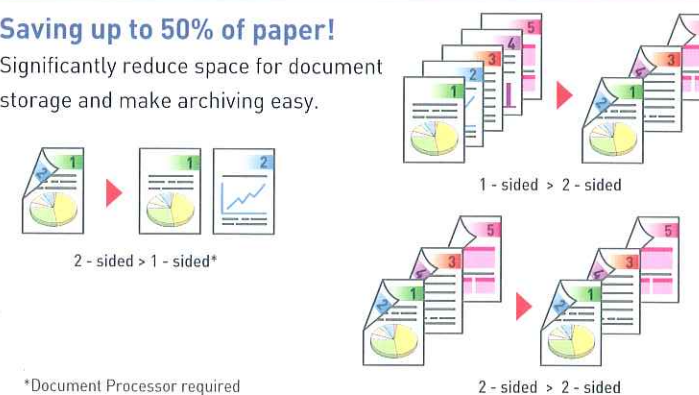
Combine up to 25-in-1 originals in one single page.



#### Duplex Printing and Copying

##### Saving up to 50% of paper!

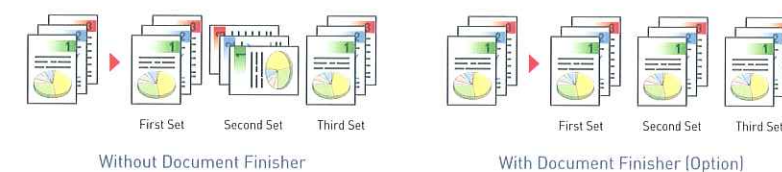
Significantly reduce space for document storage and make archiving easy.



\*Document Processor required

#### Offset Sort for Multiple Copies

##### Sorting becomes an easy task with offset outputting.



#### Efficient Document Functions with Multi-tasking

- Built-in job separator makes distribution of output document easy into different trays.
- Streamlined operation — Multi-tasking can be performed simultaneously, this includes Print/Copy/Scan/Fax (Optional)



#### Quick Warm-up Time and First Print Time

##### FS-C8020MFP / FS-C8025MFP



##### FS-6025MFP / FS-6030MFP

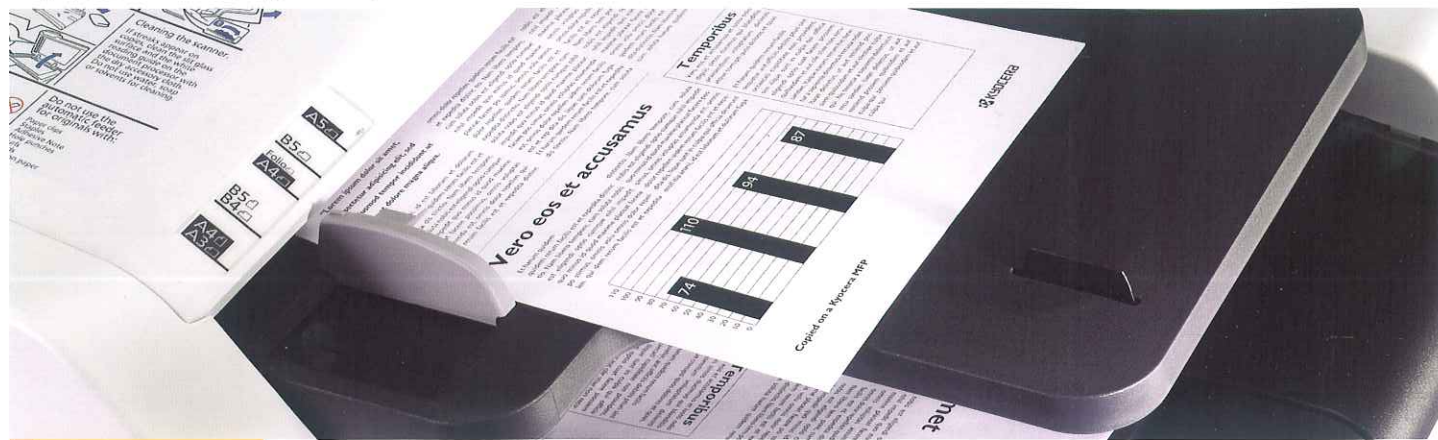


#### IPv6 Ready

The Smart MFP supports IPv6, which makes it compatible with future network infrastructures.







## Scan & Fax

### Scan

Highest Scan Resolution	Max. 600dpi
Highest Scan Speed	Max. 40 ipm

- True Multi-tasking enables simultaneous scanning and printing
- With the advanced PDF compressor, scanned images can be compressed with different qualities in different sizes.



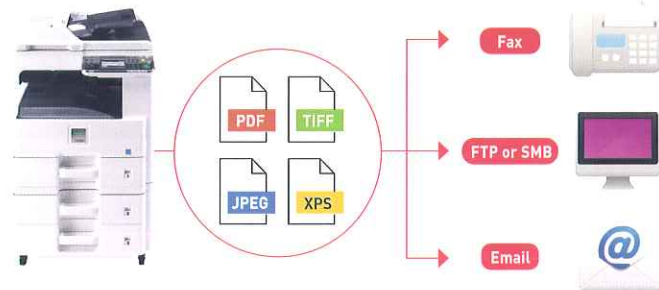
No. of broadcast items	
Email	Up to 100
Folders (SMB, FTP)	Up to 5 Folders (SMB/FTP)
FAX	Up to 100

\*Requires the optional fax kit.

### • FTP/SMB/Email/Fax Multi-Sending

Capable of scanning once and sending document to different destinations (email addresses, folders, etc.).

Maximum 200 addresses and 20 program addresses can be stored for scan destinations. LDAP query is also possible.



### Fax (Optional)

#### Fax Forwarding

- Simply forward any incoming fax to another fax machine or other destinations by email, SMB or FTP.



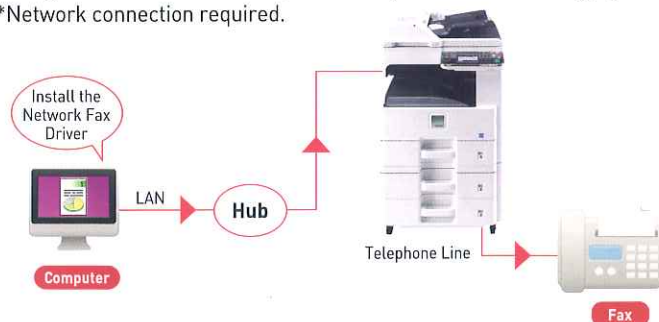
- Capable of processing A3-sized document.

#### Network Fax

#### Significantly reduce cost!

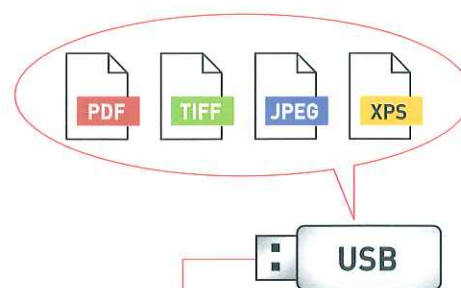
The Network Fax function enables sending and receiving faxes, even through overseas transmission, with the Super G3 Fax technology by PC.

\*Network connection required.



### Document Box

Scan to/Print from USB Memory in PDF, TIFF, JPEG or XPS format. Files are processed directly from the control panel of Smart MFP. No PC is required.



## Easy Control & Management at Your Fingertips

Personalization of settings, shortcut keys (Favorites) and language selection is available on user profiles



### Network Authentication

A user can access and manage information through network authentication for Windows Server using Kerberos or NTLM.

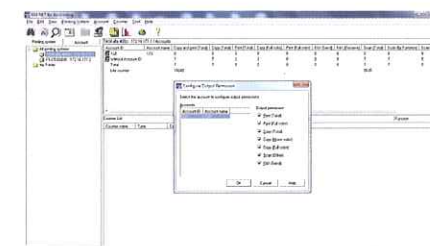


### KM-NET for Accounting

#### Convenient and time-saving!

KM-NET enables the administrator to access the management functions on the network remotely from their PC. Features include

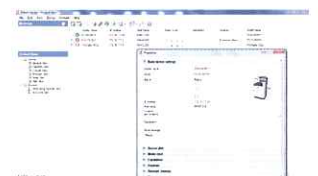
- Collecting meter count data easily
- Understanding print, copy, scan and fax volumes and costs
- Optimizing allocation of machines through analyzing the data of print/copy volumes, paper sizes that are most commonly used
- Granting permission and volume usage authorization to users



### KM-NET™ Viewer

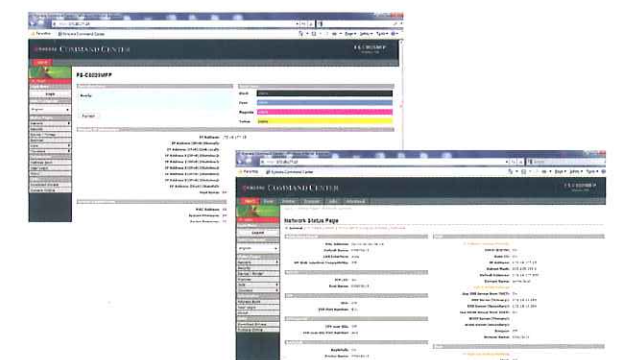
#### Comprehensive, well-designed and user-friendly!

It offers a wide range of functions, including counter reading, status checking, device configuration, print accounting, alert configuration, etc. All functions can be accessed from one administration point.



### Web Based Kyocera Command Center

By using a web browser, the administrator can access the built-in Kyocera Command Center and check the operating status of the machine, as well as change settings related to security, network printing, email and advanced networking, etc.





## Security Features to Stand Guard over Your Document, Information and Data



### Security Enhancement

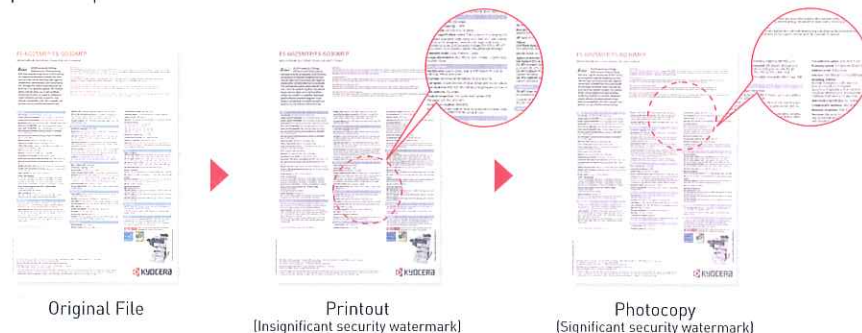
#### • SSL Data Security Protocol

With the use of Secure Socket Layer (SSL), it enhances secure communication for remote configuration and data retrieval which prevent eavesdropping and tampering.



#### • Security Watermark

The Smart MFP can affix insignificant security watermark on printouts while it significantly reveals after photocopy. This helps distinguishing originals from their photocopies and provides protection for sensitive document.



#### • Card Authentication\* (Optional)

User can use Card Authentication to ensure quick and secure access with predefined user restrictions such as color output restrictions.



\*Optional card reader accessory is required.

## Smart Design to Deliver Top Quality and Efficiency

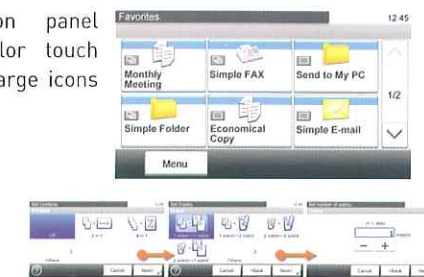
- Reduces paper jam and paper curl with enhanced paper path
- Allows quick and easy removal of paper jam by simply opening the covers, in the rare occasion of a paper jam
- Prevents paper wrinkling or image skewing with an internal paper stack adjuster in the cassette
- Ensures superior image quality with a closed and therefore dust-free image scanning unit
- Prevents paper curling and provides better fusing capability with the built-in dehumidifying heater
- Enables quick and easy replacement of drum, developer unit and other maintenance parts without any special tools



## User-Friendly Control Panel

### Multi-function Control Panel

- Easy-to-use operation panel equipped with a color touch screen that displays large icons with animated menu.



- Clear indication of job status and output status with Job Separator LED and Device Status LED

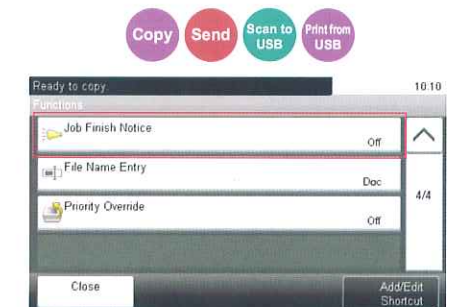


### Unique Salient Features

- The Auto Color Selection function enables cost-saving for color document printing (only for FS-C8020MFP / FS-C8025MFP).
- The Prevent Bleed-Through function provides superior background reduction when copying or scanning double-sized paper (e.g. newspaper, NCR Paper).

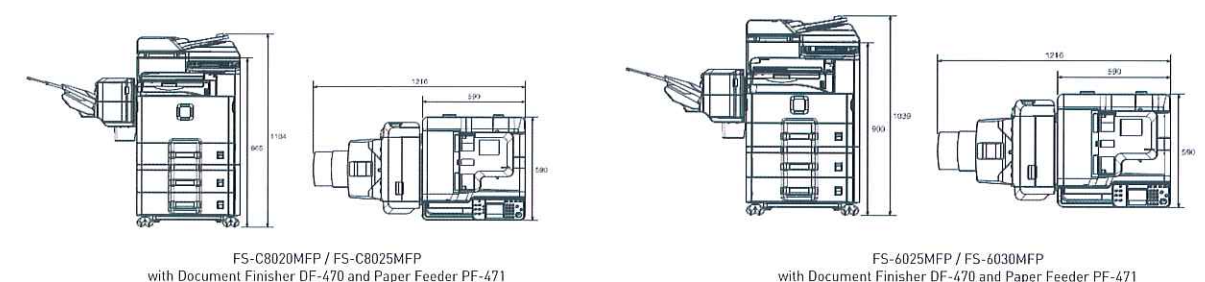


- The Job Finish Notice function sends email notification when a job is completed



### Smart and Stylish Design

- Smart MFP's small footprint makes it easy to install anywhere in your office. Its 360° all-rounded style provides a sleek look from any angle.
- Pure white x blackish blue design gives the Smart MFP a stylish outfit.



## Environmental-Friendly



- **ECONomy:** Minimum total cost of ownership with the use of long life drums and replacement parts.
- **ECology:** Environmental Friendly through reuse, recycle and reduce waste! The use of long life drum results in greater longevity and the reduction of part replacements.

Drum Life	
FS-C8020MFP and FS-C8025MFP	200,000 prints
FS-6025MFP and FS-6030MFP	300,000 prints

- **SYStem Printing:** Workflow enhancing functions can be added easily with the modular design. Cross-network compatibility is guaranteed with the integrated system software.

- The MFP is equipped with a low energy consumption ASIC that manages network response when in sleep mode.
- Power consumption as low as **1 Watt** is achieved in sleep mode
- White LED illumination