

Specifications of DocuCentre-IV C4470 / C3370 / C2270 Series

Copy Function	DC-IV C4470	DC-IV C3370	DC-IV C2270
Type	Console Type		
Memory	Standard 1.5 GB		
HDD (Optional)	80 GB		
Scanning Resolution	600 x 600 dpi		
Warm-up Time	28 sec or less (at room temperature 20°C) 24 sec or less when the main power is on (at room temperature 20°C)		
Original Paper Size	Max. 297 x 432 mm (A3, 11 x 17") for both sheet original and book original		
Output Paper Size	Max: SRA3 126 x 177" (320 x 449.6 mm), 12 x 18" (304.8 x 457.2 mm), For Bypass Tray, Max: 320 x 482.6 mm Min: A5, For Bypass Tray, Postcard (100 x 148 mm), Envelope (120 x 235 mm)		
Output Paper Weight ¹	Tray: 60 - 256 gsm, Bypass Tray: 55 - 280 gsm		
First Copy Output Time	4.4 sec <BW> 5.7 sec <Colour>	4.9 sec <BW> 6.4 sec <Colour>	6.6 sec <BW> 8.7 sec <Colour>
Continuous Copy Speed:	45 ppm <BW> 45 ppm <Colour>	35 ppm <BW> 35 ppm <Colour>	25 ppm <BW> 25 ppm <Colour>
Paper Tray Capacity	DC-IV C4470 Tray 1 & 2: 500 sheets each Tray 3: 867 sheets (A4 only) Tray 4: 1,133 sheets (A4 only) Bypass Tray: 90 sheets Total: 3090 sheets	DC-IV C3370 Tray 1 to 4: 500 sheets each Bypass Tray: 90 sheets	DC-IV C2270 Total: 2090 sheets
Dimensions	W 640 x D 685 x H 1,128 mm (with Automatic Document Feeder)		
Machine weight	136 kg	133 kg	133 kg

¹ Performance may vary for heavyweight, coated and special stocks

Print Function

	DC-IV C4470	DC-IV C3370	DC-IV C2270
Type	Built-in Type		
Print Resolution	1,200 x 2,400 dpi, 1,200 x 1,200 dpi		
PDL	PCL6, PCL5, Optional: Adobe® PostScript® 3™		
Operating System	Standard: Windows® 2000, Windows® XP, Windows Server® 2003, Windows Server® 2008, Windows Vista®, Windows® XP×64, Windows Server® 2003×64, Windows Server® 2008×64, Windows Vista® ×64, Mac OS 10.5 Adobe® PostScript® 3™ (Optional): Windows® 2000, Windows® XP, Windows Server® 2003, Windows Server® 2008, Windows Vista®, Windows® XP×64, Windows Server® 2003×64, Windows Server® 2008×64, Windows Vista® ×64, Mac OS 8.6/9.2.2, Mac OS x 10.3.9 10.4.11 (except 10.4.7), Mac OS X 10.5		
Connectivity	Standard: Ethernet 100 BASE-TX / 10 BASE-T, USB2.0 Optional: Ethernet 1000 BASE-T (Bidirectional Parallel IEEE1284-B)		

Scan Function

	DC-IV C4470	DC-IV C3370	DC-IV C2270
Type	Colour Scanner		
Scanning Speed	BW: 70 ppm, Colour: 70 ppm		
Scanning Resolution	600 x 600 dpi, 400 x 400 dpi, 300 x 300 dpi, 200 x 200 dpi		
Connectivity	Standard: Ethernet 100 BASE-TX / 10 BASE-T Optional: Ethernet 1000 BASE-T		
Scan Destinations	Scan to Email, Folder, PC / Server (using FTP / SMB protocol)		

Fax Function (Optional)

	DC-IV C4470	DC-IV C3370	DC-IV C2270
Send Document Size	Max. A3, 11 x 17"		
Transmission Time	Less than 3 seconds		
Transmission Mode	G3		
No. of Fax Lines	PBX, PSTN, Max. 3 ports		

Duplex Automatic Document Feeder

	DC-IV C4470	DC-IV C3370	DC-IV C2270
Capacity	110 sheets		
Original Paper Size	Max: A3, 11 x 17", Min: A5		
Output Paper Weight	38 - 128 gsm, In Duplex: 50 - 128 gsm		
Feeding Speed (A4LEF)	45 ppm <BW> 45 ppm <Colour>	35 ppm <BW> 35 ppm <Colour>	25 ppm <BW> 25 ppm <Colour>

Descriptions in this material, product specifications and / or appearances are subject to change without prior notice due to improvements. Please note that the product colour appears differently from the actual colour as a result of properties of papers or printing ink. Windows and Windows NT are registered trademarks of Microsoft Corporation. NetWare is a registered trademark of Novell, Inc. in the United States. Macintosh, Mac OS and Ether Talk are trademarks of Apple Computer, Inc. PostScript is a registered trademark of Adobe Systems Incorporated in each country. HP-GL is a registered trademark of Hewlett-Packard Company. Other company names or product names are registered trademarks or trademarks of each company.

Spares for the standard configuration of installed machines is supported for up to 7 years from the date of the end of machine production.

For more information or detailed product specifications, call or visit us at

Fuji Xerox (Hong Kong) Ltd.
8th Floor, Cityplaza 3
14 Taikoo Wan Road,
Taikoo Shing, Quarry Bay, H.K.
Customer Attention Centre: 2513 2513
Fax: 2513 2518

<http://www.fujixerox.com.hk>

XEROX, and the sphere of connectivity design are trademarks or registered trademarks of Xerox Corporation in the U.S. and/or other countries. ApeosPart is a trademark or registered trademark of Fuji Xerox Co., Ltd. Other trademarks are the property of their respective owners.

Finisher-A1 (Optional)²

	DC-IV C4470	DC-IV C3370	DC-IV C2270
Paper Size / Paper Weight	Max: A3, 11 x 17", Min: Postcards (4 x 6"), 55 - 220 gsm		
Stacker Capacity	[Without Staples] A4: 500 sheets, B4: 250 sheets, A3 or larger: 200 sheets, Mixed Size Stacking: 250 sheets, [With Staples]: 30 sets		

Staple

Capacity	A4: 50 sheets (Max. 90 gsm), B4 or larger: 30 sheets (Max. 90 gsm)
Paper Size	Max: A3, 11 x 17", Min: B5 LEF
Position	Single (Front / Angled Staple)

² The Optional Finisher-A1 cannot be installed on DocuCentre-IV C4470

Finisher-B1 (Optional)

	DC-IV C4470	DC-IV C3370	DC-IV C2270
Paper Size / Paper Weight	Max: A3, 11 x 17", Min: B5, 55 - 220 gsm		
Stacker Capacity	[Without Staple] A4: 2,000 sheets, B4: 1,000 sheets, Mixed Size Stacking: 300 sheets [With Staples] A4: 100 sets or 1,000 sheets, B4 or larger: 75 sets or 750 sheets Booklet / Fold: 50 sets or 600 sheets, Fold: 500 sheets		

Staple

Capacity	50 sheets (Max. 90 gsm)
Paper Size	Max: A3, 11 x 17", Min: B5 LEF
Position	Single (Front / Angled, Back / Straight), Dual (Parallel)

Punch³

Paper Size	A3, 11 x 17", B4, A4, A4 LEF, Letter (8.5 x 11"), Letter (8.5 x 11") LEF, B5 LEF
Number of Holes	2 Holes or 4 Holes, or US 2 or 3 Holes ⁴
Paper Weight	55 - 200 gsm

Booklet Finishing⁵

Capacity	Booklet: 15 sheets, Fold: 5 sheets
Paper Size	Max: A3, 11 x 17", Min: A4, Letter (8.5 x 11")
Paper Weight	Saddle-Stapling: 64 - 80 gsm, Half-Folding: 64 - 105 gsm

³ Optional Finisher-B1 Punch Kit is required

⁴ Can equip either one of 2 / 4 Hole Punch or US 2 / 3 Hole Punch for Finisher-B1

⁵ Optional Booklet Maker Unit is required

Booklet Finisher-C1 (Optional)

	DC-IV C4470	DC-IV C3370	DC-IV C2270
Paper Size / Paper Weight	Exit / Finisher Tray: Max: SRA3, 12 x 19", Min: B5, 55 - 220 gsm Booklet Tray: Max: SRA3, 12 x 18", Min: A4, Letter (8.5 x 11"), 64 - 90 gsm		
Stacker Capacity	Exit Tray: 500 sheets (A4), Finisher Tray: [Without Staple] A4: 1,500 sheets, B4 or larger: 1,500 sheets, Mixed Size Stacking: 300 sheets [With Staple] A4: 200 sets or 1,500 sheets, B4 or larger: 100 sets or 1,500 sheets, Booklet Tray: 20 sets		

Staple

Capacity	50 sheets (Max. 90 gsm)
Paper Size	Max: A3, 11 x 17", Min: B5
Positions	Single (Front / Back / Angled), Dual (Parallel)

Punch

Paper Size	A3, 11 x 17", B4, A4, A4 LEF, Letter (8.5 x 11"), Letter (8.5 x 11") LEF, B5 LEF
Number of Holes	2 or 4 holes (Option US 2 or 3 holes)
Paper Weight	55 - 220 gsm

Booklet Finishing

Capacity	Saddle-Stapling: 15 sheets, Half-Folding: 5 sheets
Paper Size	Max: SRA3, 12 x 18", Min: A4, Letter (8.5 x 11")
Paper Weight	Saddle-Stapling: 64 - 90 gsm, Half-Folding: 64 - 105 gsm

Fuji Xerox ranked No.1 in the Hong Kong color copier/laser multifunction product market for 13 consecutive years (1997-2009) in terms of unit shipments*.

* Source: IDC Asia/Pacific Semiannual Copier Tracker, 1997-2002; IDC Asia/Pacific Quarterly MFP Tracker, 2003-2009.



Reproduction Prohibitions

Please note that reproduction of the following is prohibited by law: Domestic and overseas bank notes and coins, government-issued securities, national bonds and local bond certificates. Unused postage stamps and post cards. Certificate stamps stipulated by law. The reproduction of works for copyright purposes (literary works, musical works, paintings, engravings, maps, cinematographic works, photographic works, etc.) is prohibited except when they are reproduced personally, at home or within limited range according to the above. This product is equipped with an anti-counterfeit feature. This feature is not intended to prevent illegal reproduction. Be extremely careful about the management of equipment used.



For Your Safe Use

Before using the product, read the Instruction Manual carefully for proper use.
Use the product with an appropriate adequate power source and voltage displayed. Be sure to establish a ground.
In the case of a failure or short circuit, an electric shock may result.



Printed on environmental friendly paper

DocuCentre

C4470

C3370

C2270



DocuCentre-IV C4470 / C3370 / C2270 Digital Colour Multifunction Device Easier than ever to experience high performance



DocuCentre-IV C4470 / C3370 / C2270 Multi-function Devices

Print. Copy. Scan. Fax. Fuji Xerox raises the bar on office productivity. Now it's easier than ever to experience the benefits of a high-performance multifunction device plus all the competitive advantages of cost-effective colour when you need it.

In the business world, nothing's really black and white. That's why you need colour - to clarify, to emphasise, to stand out. Bring your business to life with the DocuCentre-IV C4470 / C3370 / C2270 multifunction devices and get affordable colour printing for your workgroup.

Features at a glance

- Print, copy with optional scanning and faxing
- Fast printing and copying at up to 45ipm
- True 1,200 x 2,400 dpi print resolution
- Intuitive, easy-to-use colour user interface
- Security features for demanding office environments
- High impact colour with built-in control and accounting features

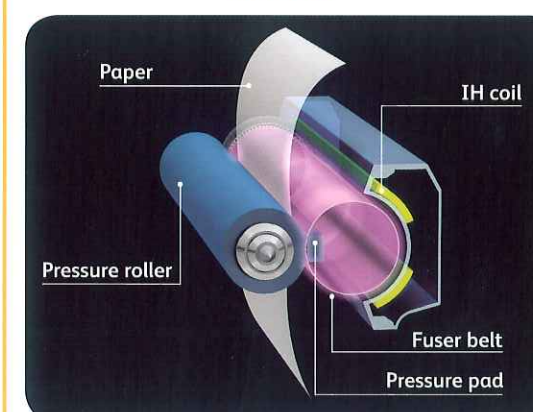


DocuCentre-IV C3370 with Four Tray Module and optional Booklet Finisher-C1

Revolutionary environmental technologies

Designed with the environment in mind, the DocuCentre-IV C4470 / C3370 / C2270 conserves precious resources without sacrificing performance or quality.

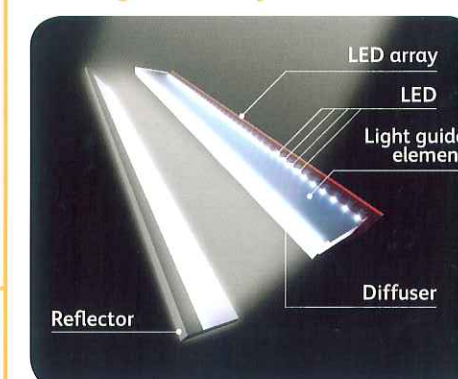
IH Fuser



This newly developed Induction Heating Fusing Technology incorporates a thin, non-magnetic metal as the heating layer inside the fuser belt that does not require pre-heating. Therefore it doesn't consume power when the machine is in standby mode. As a result, a fusing unit with the **world's quickest start-up time of only 3 seconds¹**, providing Fuji Xerox with a tremendous competitive edge.

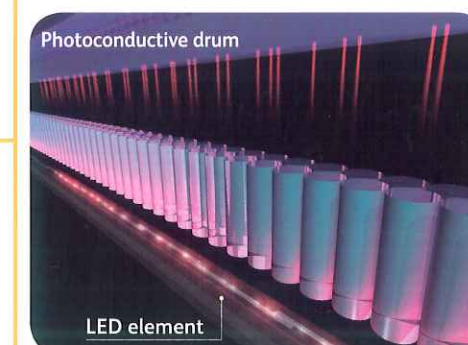
¹ At the time of publication.

High-Intensity White LED



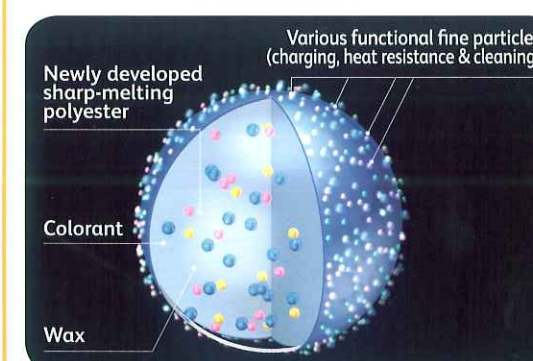
For the first time, Fuji Xerox is using LED (Light Emitting Diode) as the light source for image scanning. This enables brightness that is **1.5 times** greater than xenon lamps used in conventional devices and **reduces the power consumption by 70%**, while achieving greater scanning precision and speed.

LED Printhead "DELICIS"



Fuji Xerox has developed a high-precision, LED print head technology "DELICIS" (Digitally Enhanced Lighting Control Imaging System) that achieves a true output resolution of 1,200 x 2,400 dpi. This LED print head technology makes it possible to build even smaller devices and **reduces power consumption by 45%**.

EA-Eco toner



EA-Eco toner has been adopted in products for office use. Fusing temperature of the EA-Eco toner is more than 20°C lower than that of conventional toners, **cutting power used by around 15%**.

Enjoy outstanding reliability and convenience

New advances in Fuji Xerox technology create an extremely reliable print engine, with additional design features focused on a great user experience.

Base Unit



1
DocuCentre-IV
C3370/C2270

2
DocuCentre-IV
C4470

Optional



1
Finisher-A1[†]
Internal Stapler

2
Finisher-B1[†]
Stacker / Stapler /
Hole Puncher /
Bi-Folder / Booklet
Maker (Folding Line)

3
Booklet Finisher-C1[†]
Stacker / Stapler /
Hole Puncher /
Bi-Folder /
Booklet Maker

Smaller overall footprint. Thoughtful engineering delivers more functionality while taking up less space. The compact new imaging system lets you add the integrated Finisher-A1[†] (stapler) without increasing the device footprint¹.

High-capacity paper trays. Up to 3,090 sheets mean fewer trips to load paper, especially during long print jobs. DocuCentre-IV C4470 / C3370 / C2270 are configured with the following paper tray:

- DocuCentre-IV C3370/C2270 Four Tray Module (A5-A3)
- DocuCentre-IV C4470 Two Trays plus Tandem Tray Module (A4 Only)

Professional finishing options[†]. Create professional presentations and attractive manuals or proposals. This range of optional finishers gives you efficient, finish-on-demand versatility. These advanced finishers feature stapling, hole punching, saddle stitching and many other finishing tasks.

New design, colour user interface is an 8.5-inch WVGA colour TFT screen that provides a high-precision display using colourful icons and larger buttons. The user-friendly layout allows users to complete a job hassle-free with smooth left to right control panel operation.

Advanced scanning

Now it's easier to bring paper documents into the network, with the sophisticated scanning tools you'll find in these leading-edge multifunction devices.

Cutting-edge scanning functionality. Increase efficiency with Scan to Email for quick document distribution to multiple email addresses, Scan to Folder to store on the device, plus Scan to Network Folder or FTP.

Create searchable PDF[†] files at the device for easy archiving, organising, searching and sharing. Creating a text searchable PDF file is as easy as choosing a file format when programming a scan job – it can even be designated the default format.

Store frequently printed documents. Increase employee efficiency with robust scanning features that store frequently used forms and documents in the device's hard drive for subsequent reprinting.

Light directory access protocol (LDAP) takes the time and effort out of scanning a document to email by providing users with search access to the email address of an intended recipient from the network's address book.

Streamline network traffic and create greater operational efficiency by sending information via a URL link. Send a URL link that brings you directly to a file's location rather than the document itself.

Quickly scan files directly to a USB flash drive[†] through the USB port that is conveniently located on the front of the device. It requires no printer drivers, or even a PC!

Efficient data compression. Specific colour scanning is ideal for documents or drawings that have been stamped or highlighted using relatively few colours. It helps to compress the size of these documents (even more than through high compression), providing significantly faster transmission speeds and reducing network load and storage space on network and mail servers.



1
One touch
buttons

3
USB memory slot[†]

4
Repositioned service
buttons

5
New design,
colour user interface

2
Stylus Pen

6
Status indicators
on edge

[†] Optional

¹ DocuCentre-IV C3370 / C2270 only.

[†] Optional

Highly usable, highly productive

The DocuCentre-IV C4470 / C3370 / C2270 offer solid performance backed by unprecedented ease of use. User-centric design makes it easy to take advantage of its advanced features.

Print speeds that match the speed of your business.

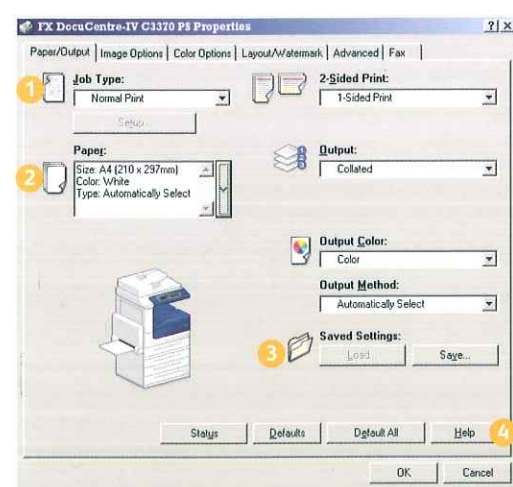
Output colour documents at a fast 25 ppm, 35 ppm or 45 ppm depending on the model chosen.

Quick warm-up time of less than 28 seconds means you spend less time waiting for your job to print.

To speed up copying an express (simple) copy feature is available that displays only the basic copy settings. This is provided in addition to the normal copy feature.

USB direct printing[†] is possible with the optional USB Media Print Kit. It can save time for users by printing PDF and TIFF files directly from a USB flash memory drive without having to boot up a PC. A perfect solution when the need to print is urgent.

WHQL certified PCL (standard) and PostScript[†] (optional) print drivers provide a consistent, easy-to-use interface for end-users that can greatly simplify your printing operations.



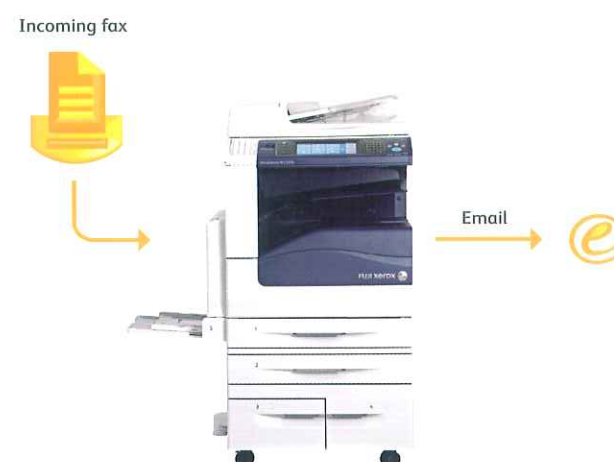
- 1 Drop down menu for secure print, fax, save to mailbox and more
- 2 Paper selection summary window
- 3 Favourite print settings
- 4 Help function for feature descriptions and driver assistance

Non-PostScript print driver is now available which allows users to print documents from Mac OS X without adding the PostScript option[‡].

Save time by storing the settings of frequently printed documents as favourites in your print driver. Settings include paper sizes, covers, duplexing, finishing and more.

Electronic fax (with optional Internet Fax Kit)[†].

If there is a concern about faxes getting lost in piles of other documents, this feature eliminates paper wastage and provides peace of mind. The optional Internet Fax kit will route incoming faxes to a nominated email address, as a TIFF file for retrieval and further distribution on demand.



Restrict users from sending faxes[†] to numbers not listed in your address book. This security feature will help protect the leakage of confidential information and reduce costs by preventing users from using the fax function for non-business related purposes.

Capture and store undelivered faxes sent directly from the device[†]. The fax number can be edited at the user interface and re-sent if required, without rescanning the document(s).

Block unwanted (junk) fax numbers[†]. This allows you to block specified fax numbers, so it does not print faxes received from those numbers in the future.

Control access, manage costs

The DocuCentre-IV C4470 / C3370 / C2270 put you in control, with some of the most advanced output security features in the industry. And our advanced reporting and management tools help you keep costs down without sacrificing quality.

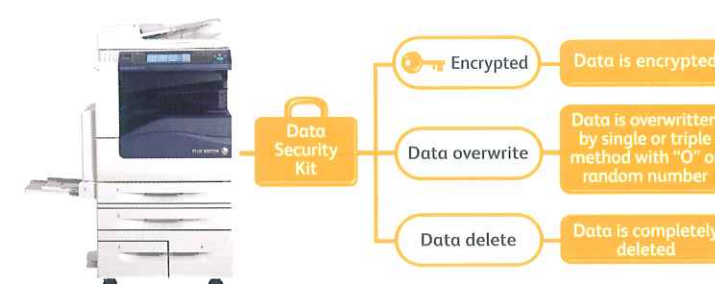
Latest in Internet standards and protocols. DocuCentre-IV C4470 / C3370 / C2270 multifunction devices support the IPv6 standard, which opens up additional IP addressing opportunities across the Internet and inside enterprise firewalls. IPv6 provides additional network security, better network routing and configuration, and improved support for high volume printing and larger print jobs.

The optional Secure Watermark Kit[†] can help prevent the unauthorised reproduction of sensitive material. Documents featuring this secure watermark cannot be copied, scanned or faxed using similarly equipped devices.

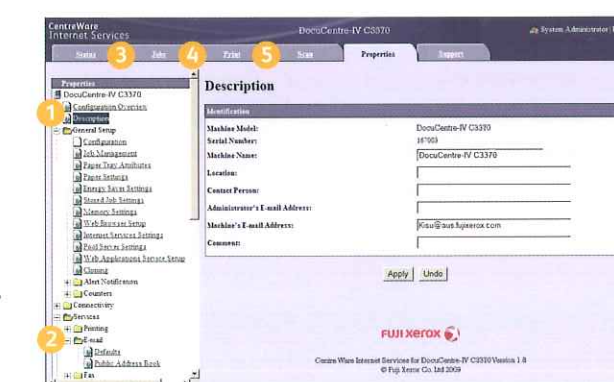
State-of-the-art security standards. The DocuCentre-IV C4470 / C3370 / C2270 conform to the latest industry standards for network security, supporting IPSec to encrypt document content, SNMPv3 to securely transfer information to users and 802.1x to securely authenticate network devices before allowing document access.

Secure Print helps prevent unauthorised viewers from seeing documents by holding jobs in the print queue until the user is authenticated, eliminating paper wastage and securing confidential information.

Data Security Kit[†] available as an option with DocuCentre devices provides administrators with three security options:



Remote fleet configuration. CentreWare Internet Services allows for simplified device configuration and administration, and lets you easily clone configurations to other similar devices on the network.



- 1 Configure auditor
- 2 Upload email / fax address books as CSV files
- 3 Monitor paper tray / consumables status
- 4 Monitor job queues
- 5 Submit driverless print jobs

Manage colour printing to minimise costs. Control costs by nominating when colour could be used and by whom. This ensures that colour is available to those individuals who truly leverage its power - such as the sales teams and marketing department.

Manage and track device usage using Xerox Standard Accounting. Device usage reports can be obtained and presented as a CSV file for greater cost control of printing, copying, scanning and faxing.

Prevent losing your settings after a fatal system failure with Setting Restore Tool. This tool will backup the settings stored on your hard drive and easily restore these settings[†].

[†] Fax / Server Fax / Internet Fax are optional.

[‡] Support Mac OS X 10.5.

[†] Optional

[†] Optional

[†] Settings can only be restored after changing the hard disk of the device.