

Specifications

Direct Fax (Optional)			
Send Document Size		A3, B4, A4	
Modem Speed		G3: 33.6/31.2/28.8/26.4/24.0/21.6/19.2/16.8/14.4/12.0/9.6/7.2/4.8/2.4kbps	
Transmission Resolution	Standard	200 x 100dpi (7.9 x 3.9 dots/mm)	
	Fine	200 x 200dpi (7.9 x 7.9 dots/mm)	
	Super Fine	400 x 400dpi (15.7 x 15.7 dots/mm), 600 x 600dpi (23.6 x 23.6 dots/mm)	
Applicable Lines		PSTN (Subscribed telephone line), PBX, (Max.G3-3 ports)	
Compliant OS		Microsoft® Windows® 2000, Microsoft® Windows® XP, Microsoft® Windows Server® 2003, Microsoft® Windows Vista™ Also supported by the PostScript driver.	

High Capacity DADF	
Type of original feeder	Automatic duplex document feeder
Original size/type	Max: A3, Min: A5/38 – 157g/m ²
	Duplex in Mono: 50 – 157g/m ²
Original feeding capacity	
150 sheets	
Original exchange speed (A4 LEF Simplex)	
Mono: 75ipm	
When using 80gsm paper,	

C-Finisher / C-Finisher with Booklet Maker (Optional)

Tray Type		C-Finisher	C-Finisher with Booklet Maker
Paper Size/ Paper Weight	Exit Tray	Sorting (Offset available)/Stacking (Offset available)	
	Finisher Tray	Sorting (Offset available)/Stacking (Offset available)	
	Booklet Tray	Not available	Sorting/Stacking
	Booklet Tray	Max.: 12 x 18" (304.8 x 457.2mm), Min.: Postcards: 52 to 280g/m ²	
Tray Capacity*1	Exit Tray	Max.: 12 x 18" (304.8 x 457.2mm), Min.: B5, 52 to 200g/m ²	
	Finisher Tray	Not available	Max.: A3, 12 x 18" (304.8 x 457.2mm), Min.: A4, 8.5 x 11" (216 x 279mm), 60 to 105g/m ²
	Booklet Tray	Not available	
	Booklet Tray	Not available	
Stapling	Exit Tray	A4 500 Sheets	
	Finisher Tray	[Without staples] A4: 3,000 sheets Paper of B4 or larger: 1,500 sheets Mixed Size Stacking ² : 300 sheets [With staples] A4: 200 sets or 3,000 sheets B4 or larger: 100 sets or 1,500 sheets Mixed Size Stacking ² : 70 sets or 200 sheets	[Without staples] A4: 1,500 sheets Paper of B4 or larger: 1,500 sheets Mixed Size Stacking ² : 300 sheets [With staples] A4: 200 sets or 1,500 sheets B4 or larger: 100 sets or 1,500 sheets Mixed Size Stacking ² : 70 sets or 200 sheets
	Booklet Tray	Not available	20 sets
	Booklet Tray	Not available	
Punching	Capacity	50 sheets (Max. 90g/m ²)	
	Paper Size	Max.: A3, 279 x 432mm (11 x 17"), Min.: B5	
	Positions	Single (Front and Rear Angled Staple), Dual (parallel)	
	Paper Size	Max.: A3, 279 x 432mm (11 x 17"), Min.: B5	
Saddle-stitch and Centre-binding	No. of Punch Holes	2/4 holes (Option: US2/3 holes)	
	Maximum Capacity	Not available	Saddle-stitch: 15 sheets (90g/m ² or less) ¹ , Centre-binding: 5 sheets
	Paper Size	Not available	Max.: A3, 11 x 17" (279 x 432mm), Min.: A4, 8.5 x 11" (216 x 279mm)
	Paper Weight	Not available	Saddle-stitch: 60 to 90 g/m ² , Centre-binding: 60 to 105 g/m ²
Dimensions/Weight		W 693 x D 644 x H 1,004 mm, 50 kg	W 844 x D 644 x H 1,004 mm, 81kg
Space requirement when connected to main body*		W1,874.0 x D779.0mm (Machine + Finisher C) W1,936.0 x 779.0mm (Machine + C-Finisher with Booklet Maker)	

¹Cover sheets can be up to 220 g/m². When using 91 to 220g/m² weight cover sheets, 64 to 80g/m² paper can be used for the text of the document .
²When using 80gsm paper.
³When sheets larger than the minimum size are stacked.
⁴There are cases when paper cannot be stored because of the paper type or its use conditions.



Fuji Xerox Co., Ltd. Recognises the importance of environmental conservation and actively works toward the promotion of recycling. Recycled parts that meet our quality standards are used in DocuCentre-II 7000/6000.

Descriptions in this material, product specifications and/or appearances are subject to change without prior notice due to improvements. Please note that the product colour appears differently from the actual colour as a result of properties of papers or printing ink. Windows and Windows NT are registered trademarks of Microsoft Corporation. NetWare is a registered trademark of Novell, Inc. in the United States. Macintosh, Mac OS and Ether Talk are trademarks of Apple Computer, Inc. PostScript is a registered trademark of Adobe Systems Incorporated in each country. HP-GL is a registered trademark of Hewlett-Packard Company. Other company names or product names are registered trademarks or trademarks of each company.

Reproduction Prohibitions. Please note that the reproduction of the following is prohibited by law: domestic and overseas bank notes, government-issued securities, national bonds and local bond certificates; unused postage stamps and some post cards; certificate stamps; and copyright material (literary works, musical works, paintings, engraving, maps, cinematographic works, photographic works etc) except where and to the extent that the local law provides otherwise. This product is equipment with anti-counterfeit feature. This feature is not intended to prevent illegal reproduction.

For Your Safe Use
Before using the product, read the Instruction Manual carefully for proper use.
Use the product with an appropriate adequate power source and voltage displayed. Be sure to establish a ground.
In the case of a failure or short circuit, an electric shock may result.

For more information or detailed product specifications, call or visit us at
Fuji Xerox (Hong Kong) Ltd.
8th Floor, Cityplaza 3
14 Taikoo Wan Road,
Taikoo Shing, Quarry Bay, H.K.
Customer Attention Centre: 2513 2513
Fax: 2513 2518

<http://www.fujixerox.com.hk>



DocuCentre-II
7000
6000



DocuCentre-II 7000/6000
Digital Multifunction Device
Achieve high performance results with intelligent & professional document processing every time



DocuCentre-II 7000/6000

Digital Multifunction Device

The Fuji Xerox DocuCentre-II 7000/6000 is your document gateway to the business world. It is fast, efficient and easy-to-operate, with reliable results of top-notch quality that Fuji Xerox is known for.

The best
business partner
you'll ever have

High productivity Fast printing and quality copying at up to 75ppm

Efficient High speed scanning of 75 images per minute for mono documents

Compatible Diverse fax functions such as PC Fax, i-Fax and server Fax are available

Easy-to-use New enhanced features include a 10.4 inch full-size colour UI panel and high capacity paper feeder

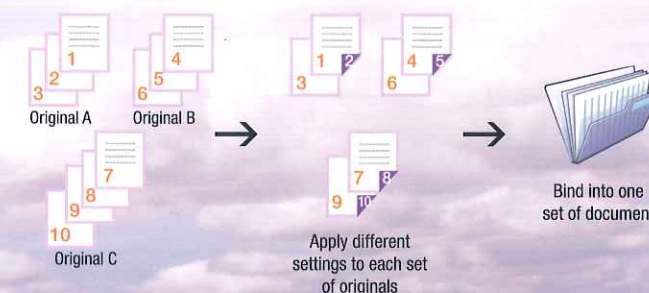
Clear copies that meet all demands

DocuCentre-II
7000/6000
Digital Multifunction Device

Get clear copies in an instant with a First Copy Out Time (FCOT) of just 3 seconds.

Copy-ready in 30 seconds Go from sleep or low-power mode to stand-by mode almost instantaneously. New technology has resulted in a quick warm-up time – the Fuji Xerox DocuCentre-II 7000/6000 is ready for copy action in 30 seconds.

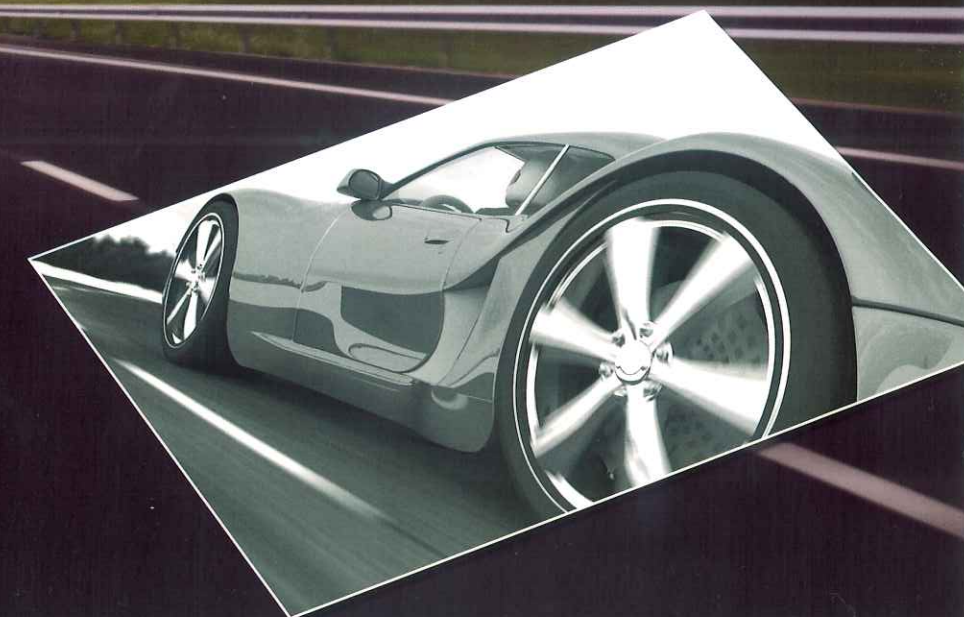
Copy and merge Eliminate manual copying and document collation. With the innovative Build Job function, you can divide a copy job into different segments and apply specific settings to each before merging them into a single seamless copy job.



Copy intelligently Besides customised annotation features like page numbers, dates and stamps, use the intelligent Bates Stamping function to copy and number your documents more effectively.

Bates Stamping allows you to choose specific pages from documents of different types (e.g. appendices and drafts), put them together and then number them accordingly as a new document. This function is ideal when you need to copy and edit different sections of books or manuals, or when you want to add old paper documents into a new report.

Copy with overlay Previously, company logos or other images could only be input as a form overlay during printing. Not anymore! The Fuji Xerox DocuCentre-II 7000/6000 lets you create form overlaid documents for enhanced security during the copying process.

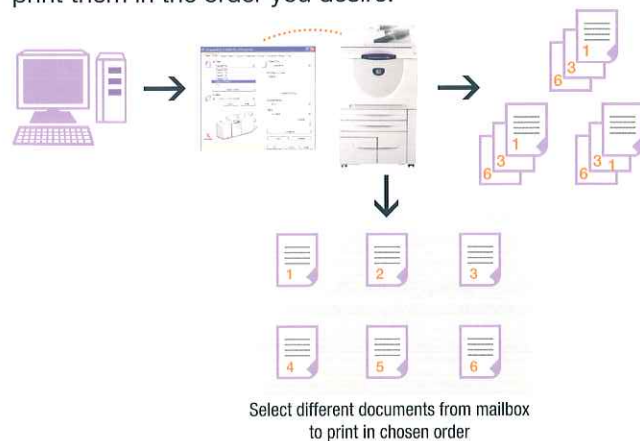


Perfect printing any way you need it

The Fuji Xerox DocuCentre-II 7000/6000 fits in seamlessly with different systems and technologies, giving you more control in the way you print.

Print directly without drivers Printing DocuWorks, PDF and TIFF files is simple. Just drag and drop the file you want to the ContentsBridge Utility, or use the Job Submission function of the CentreWare Internet Service, and let the Fuji Xerox DocuCentre-II 7000/6000 do the rest! Forget the drivers and complete your printing in seconds.

Print multiple documents the way you want to Save your documents into the mailbox of the Fuji Xerox DocuCentre-II 7000/6000 using the printer driver installed on the PC. Now, you have total control over what you want printed in the manner needed! Select different multi-page documents from the mailbox and print them in the order you desire.



Print without worries about compatibility

Your Fuji Xerox DocuCentre multifunction device works seamlessly in Citrix MetaFrame® network environments. Expect a smooth and hassle-free rollout even when operating in a network of printers.

And enhance your Citrix printing choices by using Fuji Xerox Print Utility for MetaFrame®. This printing interface boasts these functions:

- Full range of features in the Auto Created Client Printers (ACCP)
- User print settings remain the same when running applications on the LAN or through the ACCP

- High speed data communication through Independent Computing Architecture (ICA) protocol
- No adverse effect on the MetaFrame® login
- Quick and easy installation

Enhanced PS driver Employ the PC fax function and the finisher functions when you use the PS driver.

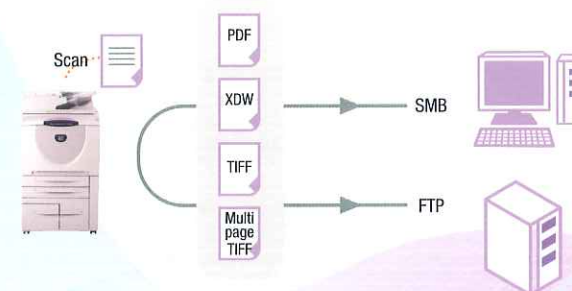
Support for Intel Macs Fuji Xerox DocuCentre-II 7000/6000 supports MAC OSx10.4.4-10.4.5 that supports Intel CPU machines.

Efficient scans that drive your operations

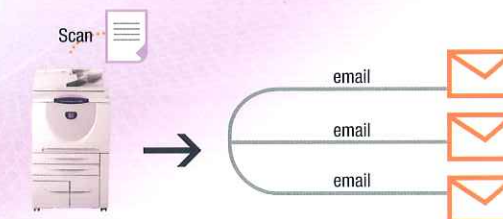
**DocuCentre-II
7000/6000**
Digital Multifunction Device

Multi-tasking is made simple with the Fuji Xerox DocuCentre-II 7000/6000.

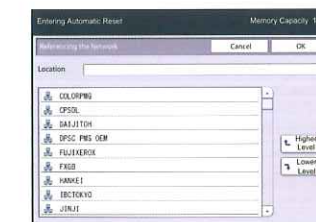
Scan into different formats Scan your documents into formats such as TIFF, multi-page TIFF, PDF or XDW, and then store them onto a PC or server for Server Message Block (SMB) or File Transfer Protocol (FTP) applications.



Scan and send to multiple e-mail addresses When different people need to see the same document, you can instantly send your scanned document to multiple e-mail recipients.



Scan to set up path to Server Message Block (SMB) or network browsing Tedious and time-consuming manual key-in is now a thing of the past. The Fuji Xerox DocuCentre-II 7000/6000 intelligently displays hierarchical structure information such as server names, PC and folder names, allowing you to set up the path of scan to SMB or network browsing.



Scan without pause Don't sacrifice productivity; scanning large volumes of documents can continue, even if you need to change the setting parameters mid-way.

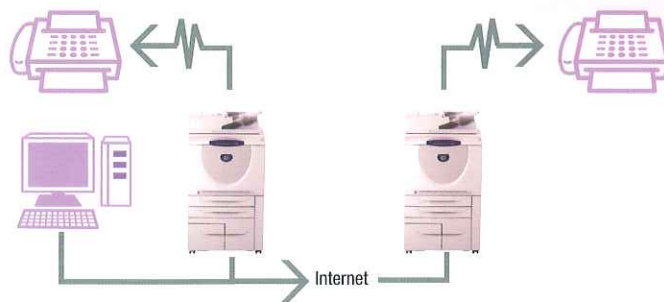
Accomplish top productivity

Improve your work efficiency and boost your productivity with these unique features.

Fax directly from PC Save time and costs and help the environment. You no longer need to print out hardcopy documents to be faxed; instead fax directly from your PC.

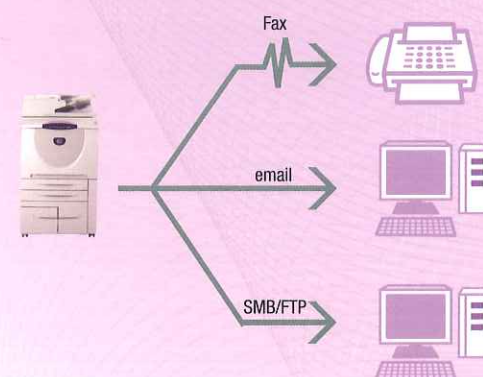


Fax by email Use the Internet Fax function to send faxed documents as email attachments through the Internet or the Intranet.



Note: Email environment and Internet fax kit are required

Fax while you work Improve your work efficiency. With the Job Flow function, documents can be faxed, sent as email attachments and saved onto the SMB or FTP server, all at the same time.



Easy fax management Store your received faxed documents as DocuWorks or PDF files in a designated PC or server. In addition, use the ApeosWare Flow Service for image processing and format conversion to automatically organise your documents according to time band or by sender ID.



Easy-to-use features at your fingertips

The Fuji Xerox DocuCentre-II 7000/6000 has been designed with the user in mind, with special features to help you work better.



Larger touch panel screen

The DocuCentre-II 7000/6000 comes with a standard 8.1 inch half black UI panel. Upgrade to a full-sized 10.4 inch colour UI panel for easier usage and a clearer view of the different functions.

Motion picture pin-points paper jam Solve paper jams quickly and easily. A clear motion picture shows you the exact position of the jam and provides you easy-to-follow instructions on how to rectify the situation.

Specifications

Configurations	DocuCentre-II 7000/6000										
Copy											
Type	Console type										
Scanning resolution	600 x 600dpi										
Writing resolution	Equivalent to 2,400 x 600dpi										
Warm-up time	30 sec (at room temperature 20°C)										
Copy original	Max.: 297 x 432mm (A3, 11 x 17") for both sheet original and book original										
Copy (paper) size	Max.: A3 (297 x 420mm), 11 x 17" (279 x 432mm), Min.: A5 (148 x 210mm) (For Bypass Tray, Max.: 12 x 18" (304.8 x 457.2mm)) Min.: Postcard (100 x 148mm) Image loss: Within 4mm for lead edge, Within 4mm for trail edge, Within 4mm for rear/front side										
Copy paper	Tray: 52 - 200g/m2, Bypass Tray: 52 - 250g/m2										
First Copy Time (A4LEF)	3.0 sec										
Copy magnification	<Size-to-Size> 1:1±0.7% , <Preset> 1:0.500, 1:0.707, 1:0.816, 1:0.866, 1:1.154, 1:1.225, 1:1.414 , <Variable> 1:0.25 - 1:4.00 (in 1% increments)										
Continuous copying speed ¹	<table> <tr> <td>B5LEF</td><td>79/68PPM</td></tr> <tr> <td>A4LEF/B5LEF/A5</td><td>75/65PPM</td></tr> <tr> <td>A4/B5</td><td>55/47PPM</td></tr> <tr> <td>B4</td><td>44/39PPM</td></tr> <tr> <td>A3</td><td>37/33PPM</td></tr> </table>	B5LEF	79/68PPM	A4LEF/B5LEF/A5	75/65PPM	A4/B5	55/47PPM	B4	44/39PPM	A3	37/33PPM
B5LEF	79/68PPM										
A4LEF/B5LEF/A5	75/65PPM										
A4/B5	55/47PPM										
B4	44/39PPM										
A3	37/33PPM										
Paper feed method/capacity ²	4,450 sheets 500 x 2 Tray + 1,490 + 1,860 + Bypass 100 sheets. 6,450 sheets with HCF tray.										
Number of continuous copy ³	9,999 sheets										
Power supply	AC220 - 240 ±10% /110V ±10% , 10/15A for both 50/60Hz ±3%										
Max. power consumption	1.7kVA (@220VAC), 1.8kVA (@230VAC), 1.9kVA (@240VAC), 1.65kVA (@110VAC), In Sleep Mode: 2.3W (@230V AC), 6.65kWh ⁴ In Low Power Mode: 158W@230V AC *Low Power Mode is not factory setting.										
Machine size	W 620 x D 779 x H 1,152 mm										
Machine weight	187kg										
Machine space	W 1,491 x D 779 mm (With Bypass Tray fully extended)										

¹Speed may drop to adjust for image quality. Depending on the paper type and tray, productivity may drop.

²When using 80gsm paper.

³There are cases where the machine operation may temporarily suspend due to stabilisation processing of the image quality.

⁴TEC (Typical Energy Consumption).

Print

Printer Type	Built-in Type				
Continuous Print Speed	Same as the machine speed				
Output Resolution	Standard: 600 x 600 dpi (23.6 x 23.6 dots/mm), High Resolution: 1,200 x 1,200 dpi (47.2 x 47.2 dots/mm)				
PDL	<table> <tr> <td>Standard</td><td>PCL6, PCLSe</td></tr> <tr> <td>Optional</td><td>Adobe® PostScript® 3™¹</td></tr> </table>	Standard	PCL6, PCLSe	Optional	Adobe® PostScript® 3™ ¹
Standard	PCL6, PCLSe				
Optional	Adobe® PostScript® 3™ ¹				
Compliant Protocol	Standard (Ethernet) TCP/IP (SMB, LPD, Port9100, IPP), NetBEUI (SMB), IPX/SPX (NetWare), EtherTalk (optional), Bonjour (optional) • EtherTalk is supported by Mac OS 7.5.3 - 9.2.2, and Mac OS X 10.1.5/10.2.x/10.3.9 - 10.4.6 • Bonjour is supported by Mac OS X 10.2.x or later				
Compliant OS	<table> <tr> <td>Standard</td><td>Microsoft® Windows® 2000, Microsoft® Windows® XP, Microsoft® Windows Server® 2003, Microsoft® Windows Vista™</td></tr> <tr> <td>Adobe PostScript® 3™ Kit (optional)</td><td>Microsoft® Windows® 2000, Microsoft® Windows® XP, Microsoft® Windows Server® 2003, Microsoft® Windows Vista™ , Mac OS 8.6 - Mac OS 9.2.2 English, Mac OS X 10.3.9 - 10.4.9 English</td></tr> </table>	Standard	Microsoft® Windows® 2000, Microsoft® Windows® XP, Microsoft® Windows Server® 2003, Microsoft® Windows Vista™	Adobe PostScript® 3™ Kit (optional)	Microsoft® Windows® 2000, Microsoft® Windows® XP, Microsoft® Windows Server® 2003, Microsoft® Windows Vista™ , Mac OS 8.6 - Mac OS 9.2.2 English, Mac OS X 10.3.9 - 10.4.9 English
Standard	Microsoft® Windows® 2000, Microsoft® Windows® XP, Microsoft® Windows Server® 2003, Microsoft® Windows Vista™				
Adobe PostScript® 3™ Kit (optional)	Microsoft® Windows® 2000, Microsoft® Windows® XP, Microsoft® Windows Server® 2003, Microsoft® Windows Vista™ , Mac OS 8.6 - Mac OS 9.2.2 English, Mac OS X 10.3.9 - 10.4.9 English				
Fonts	<table> <tr> <td>Standard</td><td>PCL6/5: 82 European fonts, 35 Symbol sets</td></tr> <tr> <td>Adobe PostScript® 3™ Kit (optional)</td><td>136 Roman fonts</td></tr> </table>	Standard	PCL6/5: 82 European fonts, 35 Symbol sets	Adobe PostScript® 3™ Kit (optional)	136 Roman fonts
Standard	PCL6/5: 82 European fonts, 35 Symbol sets				
Adobe PostScript® 3™ Kit (optional)	136 Roman fonts				
Emulation	ESC/P (VP-1000), HP-GL (HP7586B), HP-GL2/RTL (HP DesignJet 750C Plus), PCL5/PCL6 (HP LaserJet 4200)				
CPU	PowerPC e300 667MHz				
Memory	Standard: 768 MB (Maximum)				
Harddisk	40GB				
Interface	<table> <tr> <td>Standard</td><td>Ethernet 100BASE-TX/10BASE-T</td></tr> <tr> <td>Optional</td><td>USB2.0</td></tr> </table>	Standard	Ethernet 100BASE-TX/10BASE-T	Optional	USB2.0
Standard	Ethernet 100BASE-TX/10BASE-T				
Optional	USB2.0				

¹When Adobe® PostScript® 3™ Kit is installed.

Scan

Type	Mono scanner								
Scanning size	Max.: 297 x 420mm (A3)								
Scanning resolution	600 x 600dpi, 400 x 400dpi, 300 x 300dpi, 200 x 200dpi (23.6 x 23.6dot/mm, 15.7 x 15.7dot/mm, 11.8 x 11.8dot/mm, 7.9 x 7.9dot/mm)								
Scanning tone	1bit for each RGB (Input: 8bit)								
Original scanning speed ¹	Monochrome: 75 ipm								
Interface	Ethernet 100BASE-TX/10BASE-T								
Save to Mailbox	<table> <tr> <td>Protocol</td><td>TCP/IP (Salutation, HTTP)</td></tr> <tr> <td>Output Format</td><td>Monochrome Binary: TIFF, DocuWorks², PDF²</td></tr> <tr> <td>Driver</td><td>TWAIN</td></tr> <tr> <td>Supported OS</td><td>Microsoft® Windows® 2000, Microsoft® Windows® XP, Microsoft® Windows Server® 2003, Microsoft® Windows Vista™</td></tr> </table>	Protocol	TCP/IP (Salutation, HTTP)	Output Format	Monochrome Binary: TIFF, DocuWorks ² , PDF ²	Driver	TWAIN	Supported OS	Microsoft® Windows® 2000, Microsoft® Windows® XP, Microsoft® Windows Server® 2003, Microsoft® Windows Vista™
Protocol	TCP/IP (Salutation, HTTP)								
Output Format	Monochrome Binary: TIFF, DocuWorks ² , PDF ²								
Driver	TWAIN								
Supported OS	Microsoft® Windows® 2000, Microsoft® Windows® XP, Microsoft® Windows Server® 2003, Microsoft® Windows Vista™								
Scan to PC	<table> <tr> <td>Protocol</td><td>TCP/IP (SMB, FTP)</td></tr> <tr> <td>Supported OS</td><td>SMB: Microsoft® Windows® 2000, Microsoft® Windows® XP, Microsoft® Windows Server® 2003, Microsoft® Windows Vista™, Mac OS X 10.3.9/10.4.x FTP: Microsoft® Windows® 2000, Microsoft® Windows® XP, Microsoft® Windows Server® 2003, Microsoft® Windows Vista™, Mac OS X 10.3.9/10.4.2/10.4.4 English, NetWare® 5.11/5.12</td></tr> <tr> <td>Output Format</td><td>Monochrome Binary: TIFF (Compression method: MH, MMR), DocuWorks document, PDF</td></tr> </table>	Protocol	TCP/IP (SMB, FTP)	Supported OS	SMB: Microsoft® Windows® 2000, Microsoft® Windows® XP, Microsoft® Windows Server® 2003, Microsoft® Windows Vista™, Mac OS X 10.3.9/10.4.x FTP: Microsoft® Windows® 2000, Microsoft® Windows® XP, Microsoft® Windows Server® 2003, Microsoft® Windows Vista™, Mac OS X 10.3.9/10.4.2/10.4.4 English, NetWare® 5.11/5.12	Output Format	Monochrome Binary: TIFF (Compression method: MH, MMR), DocuWorks document, PDF		
Protocol	TCP/IP (SMB, FTP)								
Supported OS	SMB: Microsoft® Windows® 2000, Microsoft® Windows® XP, Microsoft® Windows Server® 2003, Microsoft® Windows Vista™, Mac OS X 10.3.9/10.4.x FTP: Microsoft® Windows® 2000, Microsoft® Windows® XP, Microsoft® Windows Server® 2003, Microsoft® Windows Vista™, Mac OS X 10.3.9/10.4.2/10.4.4 English, NetWare® 5.11/5.12								
Output Format	Monochrome Binary: TIFF (Compression method: MH, MMR), DocuWorks document, PDF								
Scan to Mail	<table> <tr> <td>Protocol</td><td>TCP/IP (SMTP)</td></tr> <tr> <td>Output Format</td><td>Monochrome Binary: TIFF (Compression method: MH, MMR), DocuWorks document, PDF</td></tr> </table>	Protocol	TCP/IP (SMTP)	Output Format	Monochrome Binary: TIFF (Compression method: MH, MMR), DocuWorks document, PDF				
Protocol	TCP/IP (SMTP)								
Output Format	Monochrome Binary: TIFF (Compression method: MH, MMR), DocuWorks document, PDF								

¹Scanning speed differs depending on originals and resolution.

²When extracting by CentreWare Internet Services.

Fax (Optional)

Send Document Size	Max.: A3, 11 x 17", Long documents can be used (Max. Length: 600 mm)										
Recording Paper Size	Max.: A3, 11 x 17", Min.: A5										
Transmission Speed ¹	2 second or more but below 3 second ²										
Transmission Mode	UNIQUE G3, ITU-T G3										
Transmission Resolution	<table> <tr> <td>Standard</td><td>8 x 3.85 lines/mm, 200 x 100 dpi</td></tr> <tr> <td>Fine</td><td>8 x 7.7 lines/mm, 200 x 200 dpi</td></tr> <tr> <td>Super Fine</td><td>16 x 15.4 lines/mm</td></tr> <tr> <td>Super Fine (400 dpi)</td><td>400 x 400dpi</td></tr> <tr> <td>Super Fine (600 dpi)</td><td>600 x 600dpi</td></tr> </table>	Standard	8 x 3.85 lines/mm, 200 x 100 dpi	Fine	8 x 7.7 lines/mm, 200 x 200 dpi	Super Fine	16 x 15.4 lines/mm	Super Fine (400 dpi)	400 x 400dpi	Super Fine (600 dpi)	600 x 600dpi
Standard	8 x 3.85 lines/mm, 200 x 100 dpi										
Fine	8 x 7.7 lines/mm, 200 x 200 dpi										
Super Fine	16 x 15.4 lines/mm										
Super Fine (400 dpi)	400 x 400dpi										
Super Fine (600 dpi)	600 x 600dpi										
Coding Method	MH, MR, MMR, JBIG										
Modem Speed	G3: 33.6/31.2/28.8/26.4/24.0/21.6/19.2/16.8/14.4/12.0/9.6/7.2/4.8/2.4kbps										
Applicable Lines	PSTN (Subscribed telephone line), PBX , Maximum 3 lines ³										

¹Transmission speed for sending only image information; does not include communication control time.

Note that actual communication times will vary according to the content of the original, the other party's device and conditions of the communication line.

²Standard image quality (8 x 3.85 lines/mm) for originals of A4 size with approximately 7 characters;

At high-speed mode (Min. 28.8 kbps: JBIG) transmission.

³The optional Fax Kit (1 line), additional G3 Port Kit (2 lines) and Fax extension board kit are necessary.