

Specifications

Configuration	DocuCentre-II 5010	DocuCentre-II 4000
Output Speed*	55ppm	45ppm
Paper Handling	Duplex Automatic Document Feeder	
	Capacity	75sheets ¹
	Scanning Speed	55ipm
	Original Paper Weight	38gsm - 128gsm
	Paper Trays Capacity ²	Tray 1 & 2: 500 sheets each Tray 3: 800 sheets Tray 4: 1,200 sheets Bypass Tray: 95 sheets
Paper Handling	Paper Weight	Tray 1: 60gsm - 105gsm Tray 2: 60gsm - 216gsm Tray 3 & 4: 60gsm - 216gsm Bypass: 60gsm - 216gsm
	Output Trays Capacity ³	Centre Output Tray: 500 sheets Exit 2 Tray: 250 sheets Side Tray: 100 sheets
	Finisher ⁴	B Finisher C Finisher with Booklet Maker
Copy	First Copy Out Time	3.2 seconds or less
	Resolution	600 x 600 dpi
	Reduction/Enlargement	25% - 400%
Print ⁵	Processor	Power PC-350MHz
	Memory	512MB ⁶ , 40GB HDD
	Resolution	1,200 x 1,200dpi
	PDL	PCL6, PCL5e, Adobe® PostScript® Level 3
Print ⁵	Operating System Support	Windows® 2000/XP, Windows® Server™ 2003, Windows® Vista, Mac OS
	Connectivity	100Base-TX/10Base-T, Parallel Port (IEEE1284), USB2.0 ⁷
	Protocol	TCP/IP, IPX/SPX, EtherTalk, SMB, IPP, NetBEUI, RFC1876, Port9100
Scan ⁸	Speed	55ipm
	Resolution	Up to 600 x 600dpi
	Output Format	TIFF(MH, MMR), PDF, XDW
Fax1 ⁹	Scan Destinations	FTP, SMB, Mailbox, Email
	Transmission Speed	Less than 3 seconds (G3: 28.8kbps, JBIG)
	Compression System	MH, MR, MMR, JBIG
	Resolution	Up to 600 x 600dpi
General	Number of Fax Line	Standard: 1Line, Maximum: 3 Lines (with additional 2 Lines ¹⁰)
	Power Consumption	Maximum Power Consumption: 1.5kVA Max (110V), 1.44kVA Max (120V), 1.76kVA Max (220V), 1.92kVA Max (240V)
	Warm Up Time	30 seconds or less
General	Dimensions ¹¹ / Weight ¹²	640 x 650 x 283mm (WxDxH) / 73kg
	Space Requirements ¹³	976 x 652mm (WxD) (main unit)
		1,537 x 667mm(WxD) (main unit with B Finisher)
		1,805 x 677mm(WxD) (main unit with C Finisher with Booklet Maker)

* 80gsm paper

¹ The speed may be reduced due to image quality adjustment

² When the Exit 2 Tray (Optional) or B/C Finisher with booklet maker (Optional) is installed, the Centre Output Tray capacity is 250 sheets

³ 3-hole is available with optional 3-hole Punch Kit

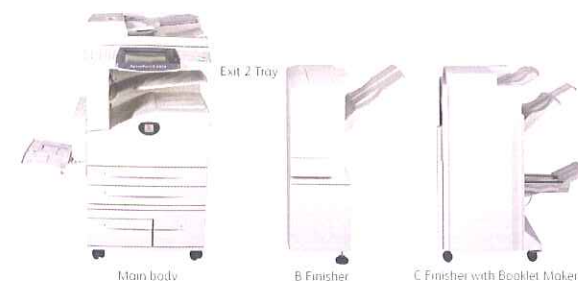
⁴ 128MB for model with only copy function

⁵ Excluding optional accessories

⁶ Excluding paper, optional accessories and consumables

⁷ When the Bypass Tray is closed and exclude Side Tray

⁸ Optional



Fuji Xerox Co., Ltd. Recognises the importance of environmental conservation and actively works toward the promotion of recycling. Recycled parts that meet our quality standards are used in DocuCentre-II 5010/4000.

Descriptions in the material, product specifications and/or appearances are subject to change without prior notice due to improvements. Please note that the product colour appears differently from the actual colour as a result of properties of papers or printing ink. Windows and Windows NT are registered trademarks of Microsoft Corporation. NetWare is a registered trademark of Novell, Inc. in the United States. Macintosh, Mac OS and EtherTalk are trademarks of Apple Computer, Inc. PostScript is a registered trademark of Adobe Systems Incorporated in each country. HP-GL is a registered trademark of Hewlett-Packard Company. Other company names or product names are registered trademarks or trademarks of each company.

Reproduction Prohibitions. Please note that the reproduction of the following is prohibited by law: domestic and overseas bank notes, government-issued securities, national bonds and local bond certificates; unused postage stamps and some post cards; certificate stamps; and copyright material (literary works, musical works, paintings, engraving, maps, cinematographic works, photographic works etc) except where and to the extent that the local law provides otherwise. This product is equipped with anti-counterfeit feature. This feature is not intended to prevent illegal reproduction.



For Your Safe Use

Before using the product, read the Instruction Manual carefully for proper use.

Use the product with an appropriate adequate power source and voltage displayed. Be sure to establish a ground. In the case of a failure or short circuit, an electric shock may result.



For more information or detailed product specifications, call or visit us at

Fuji Xerox (Hong Kong) Ltd.
8th Floor, Cityplaza 3
14 Taikoo Wan Road,
Taikoo Shing, Quarry Bay, H.K.
Customer Attention Centre: 2513 2513
Fax: 2513 2518

<http://www.fujixerox.com.hk>

XEROX, and the sphere of connectivity design are trademarks or registered trademarks of Xerox Corporation in the U.S. and/or other countries.

The contents described herein are correct as of March 2011

DocuCentre-II

5010

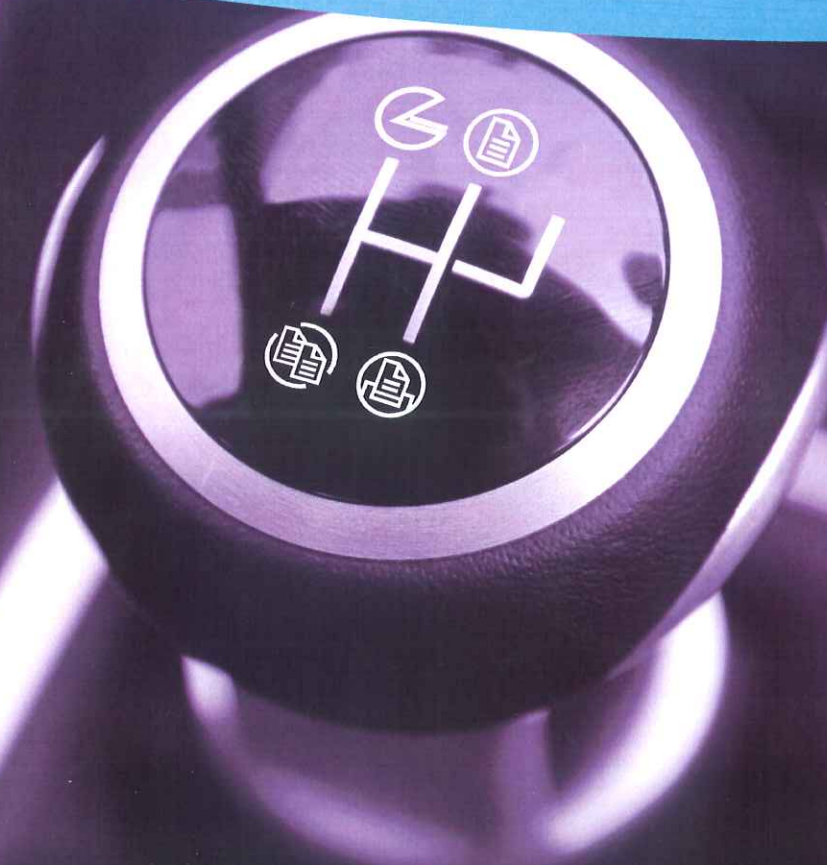
4000



DocuCentre-II 5010/4000

Digital Multifunction Device

All features you need in one compact body



DocuCentre-II 5010/4000

Digital Multifunction Device

Designed to power your business to greater levels of productivity, the Fuji Xerox DocuCentre-II 5010/4000 fits state-of-the-art print, copy, scan and fax features into one compact design.

With enhanced "smart" security features to protect both documents and the network, this hardy workhorse is the most advanced in its class and in the industry. The DocuCentre-II 5010/4000 is all you will ever need to give your business the edge.

DocuCentre-II 5010/4000

Digital Multifunction Device

Advanced features for a **top performance**

When you need — Security

Is your business constantly threatened by failed security initiatives, information leaks, unprotected confidential data and insecure print/copy/scan/fax processes?

Secure your business's operational workflow processes with the DocuCentre-II 5010/4000. Equipped with multi-tiered, security functions from password encryption and hard disk overwrite* to secure watermark†

and more, this multi-function device keeps your office's day-to-day printing, copying, scanning and fax processes safe from prying eyes.

When you need — Performance

When deadlines loom, every second counts. The DocuCentre-II 5010/4000 empowers you with the ability to meet the tightest deadline with its quick warm-up, fast print output, speedy copying and scanning. This is the crucial difference in the efficient running of your operations. Additionally, three simultaneous fax lines give you the multi-tasking capability to set priority, send and receive faxes all at the same time.

When you need — Quality

Unlike other printers, the DocuCentre-II 5010/4000 does not sacrifice speed for quality. The DocuCentre-II 5010/4000 faithfully reproduces true 1,200dpi print image quality each time, even at full speed. Using only high-quality EA Toner, the DocuCentre-II 5010/4000 also recreates superior, detailed images quickly.

Thoughtful features have also been incorporated into the DocuCentre-II 5010/4000. A 2-line charge-coupled device (CCD) helps produce cleaner copies by preventing the appearance of black stripes especially when the machine is on Duplex Automatic Document Feeder mode. While the Lightweight Original Document Mode reproduces clear and fine images even when copying lightweight documents like tracing paper.

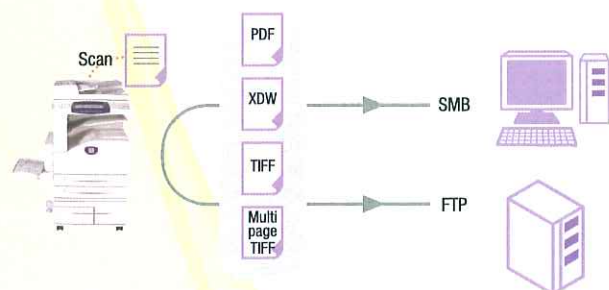


*optional item is required.

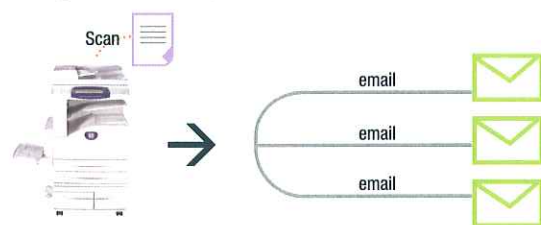
SCAN[†] Quick, efficient, secured scanning

"Smart", efficient and secure, DocuCentre-II 5010/4000 is designed to give improved scanning speeds of up to 55ipm for DocuCentre-II 5010 and 52ipm for DocuCentre-II 4000, thereby boosting your organisation's efficiency and productivity.

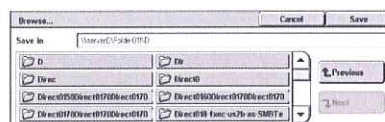
Scan to Server Message Block (SMB) or File Transfer Protocol (FTP) Scan your documents into formats such as TIFF, multi-page TIFF, PDF or XDW, and then store them onto a PC or server for SMB or FTP applications.



Scan and send to multiple e-mail recipients When different people need to see the same document, you can instantly send your scanned document to multiple e-mail recipients.

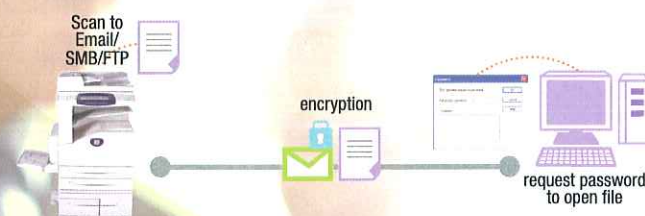


Supports scanning to SMB/Network Browsing For greater ease-of-use, Fuji Xerox DocuCentre-II 5010/4000 references the network to display hierarchical structure details such as server name, PC name, folder name on the display panel. This way, you can save time by simply setting up the scanning path to SMB.



SCAN SECURITY

Password encryption Restrict access to your scanned PDF and DocuWorks documents in one easy step. Simply set a password to open the document and the DocuCentre-II 5010/4000 will encrypt the file. This smart feature also lets you prevent internal falsification as it prohibits unauthorised editing, posting and printing.



COPY Copy smart for more productive organisation

DocuCentre-II
5010/4000
Digital Multifunction Device

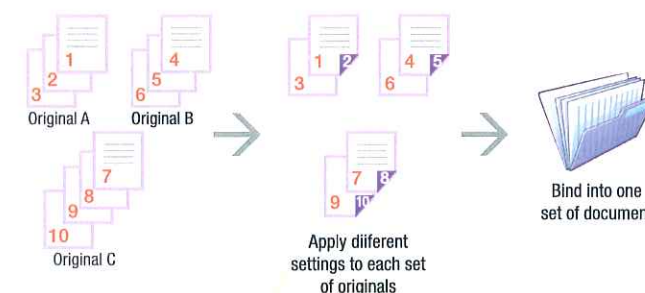
Packed with handy features, the improved DocuCentre-II 5010/4000 provides a powerful productivity boost to your staff! Boasting a speedy First Copy Out Time (FCOT) of 3.2sec, the industry-leading DocuCentre-II 5010/4000 is one of the best in its class.

Copy with overlay Previously, company logos or other images could only be input as a form overlay during printing only. Not anymore! The Fuji Xerox DocuCentre-II 5010/4000 let you create form overlaid documents for enhanced security during the copying process.

Easy-access control panel By putting commonly used functions right at your fingertips, the improved easy-access control panel is a great way for staff to access common document storage routines without the need for extensive training.

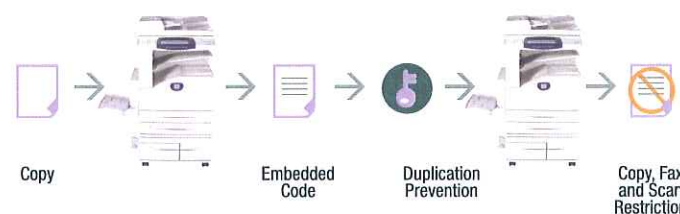
Enhanced productivity with Build Job

This unique feature allows users to easily merge, split and manipulate hardcopy documents, eliminating the need for tedious manual copying and collation.

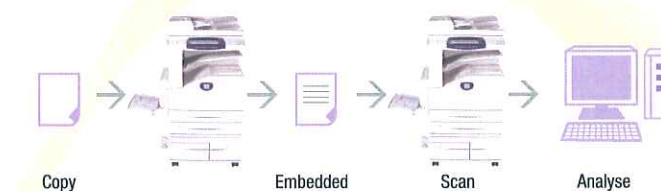


COPY SECURITY

Secure watermark[†] for duplication prevention Our "smart" security technology protects your documents against unauthorised copying, scanning and faxing even on other devices equipped with secure watermarks!



Simply embed a digital code within your documents and they'll be automatically protected against unauthorised duplication with a secure watermark[†]. These digital codes also help you track document properties such as job start dates and times.



In addition to this, the optional ApeosWare Secure Watermark Analyzer[†] provides an audit trail tracking copies containing the secure watermark[†] and logs the following information for peace of mind:

- Document title
- Date and time the document was created
- The device used to reproduce the document
- IP address of the client PC that generates prints.



PRINT[†]

Speedy, quality prints on demand

Discover the benefits of superior print performance with the quick DocuCentre-II 5010/4000. Warming up in 30 seconds flat and producing prints at speeds of up to 55ppm, DocuCentre-II 5010/4000's EA toner technology also guarantees brilliant and sharp contrasts!

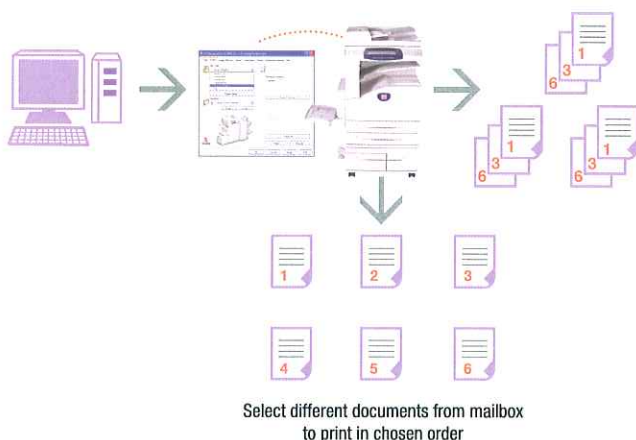
Print DocuWorks, PDF and TIFF files without a driver

Simply drag and drop all your DocuWorks*, PDF and TIFF files to the ContentsBridge Utility or use the Job Submission function of the CentreWare Internet Service for hassle-free direct printing.

*DocuWorks Viewer Light (free) is required

Save in mailbox for batch printing

Utilise the latest standards in efficiency by saving documents to the mailbox using the printer driver installed on your PC and batch printing documents directly from the mailbox. Enjoy even greater control with the DocuCentre-II 5010/4000's unique ability to access print settings whilst printing.



Citrix® MetaFrame® compatibility

Integrating seamlessly into Citrix® MetaFrame® network environments, the enhanced compatibility of the DocuCentre-II 5010/4000 allows for easy rollout and administration of networked printers in addition to expanded printer functionality.

Also allowing for advanced client-side printer functionality and easy maintenance, the printing interface of the Fuji Xerox Print Utility for MetaFrame® boasts the following features:

- Quick and easy installation
- Full range of features in the Auto Created Client Printers (ACCP)
- User print settings that remain the same when running applications either on the LAN or through the ACCP
- High speed data communication via ICA protocol
- No adverse affect on the MetaFrame® login.

PRINT SECURITY

Even better protection for your private documents

Recognising the security needs of your business, the Private Charge Print feature allows administrators to require users to store print jobs in private password protected directories for added security. When output is desired, the user must authenticate at the control panel before selecting the documents to be printed.



FAX[†]

Simultaneous faxing for enhanced office operations

DocuCentre-II 5010/4000
Digital Multifunction Device

Designed with your needs in mind, DocuCentre-II 5010/4000 enhances business operations with speedy, secure faxing with up to a maximum of three simultaneous G3 fax lines[†] - send and receive faxes all at the same time! A 600 x 600 dpi resolution also ensures razor-sharp messages.

Paperless faxing with PC Fax Forget about having to print hard copies of documents before faxing them. With the Fuji Xerox DocuCentre-II 5010/4000, you can now send faxes directly from the PCL print driver on your PC and receive faxes electronically, without a fax machine. No more having to file countless physical faxes!



FAX SECURITY

No More Accidental Faxes Sending a fax or iFax to the wrong address is now a thing of the past with the DocuCentre-II 5010/4000's Re-enter Recipients feature. When activated, the DocuCentre-II 5010/4000 will prompt the user to re-enter the recipient's phone number and will only start the transmission process if the same recipient has been entered.

Receive faxes easily and efficiently

With the optional ApeosWare Flow Service[†], faxes are sorted according to the time received for greater efficiency. The added software also enables the DocuCentre-II 5010/4000 to easily convert faxes to PDF and DocuWorks files.

